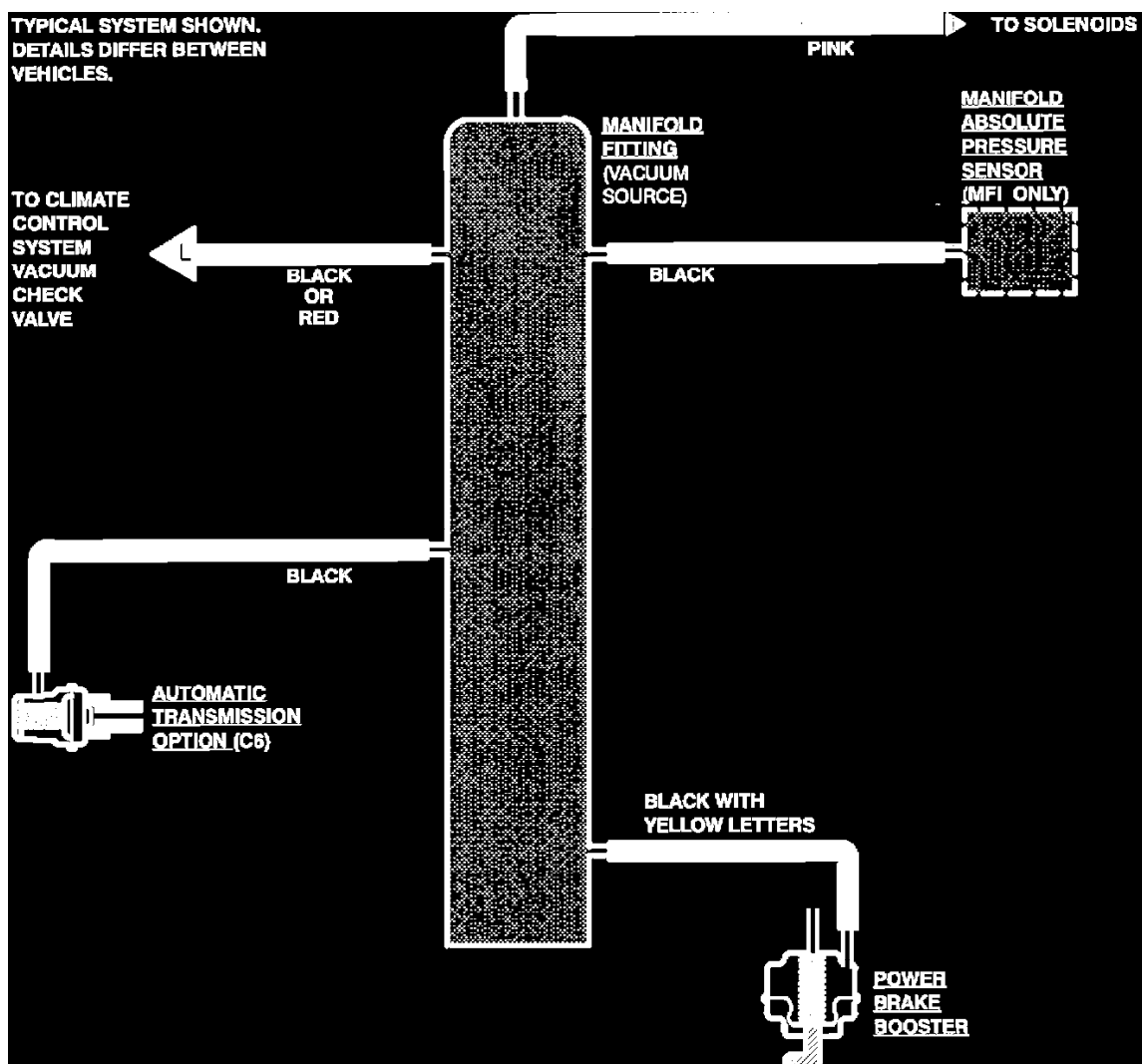


Vehicle: Vacuum and Vapor Hose Diagrams



Vacuum Distribution

Alphabetical Index

- Calibration 2-64E-R11 JKB
See: Emission Control Systems/Federal (49 States)
- Calibration 2-64E-R11 JKD
See: Emission Control Systems/Canada
- Calibration 2-64E-R11 JKF
See: Emission Control Systems/50 States
- Calibration 2-64H-R11 JKB
See: Emission Control Systems/Federal (49 States)
- Calibration 2-64H-R11 JKD
See: Emission Control Systems/Canada
- Calibration 2-64H-R11 JKF
See: Emission Control Systems/50 States
- Calibration 2-64K-R11 JKC
See: Emission Control Systems/Federal (49 States)
- Calibration 2-64K-R11 JKJ
See: Emission Control Systems/Federal (49 States)
- Calibration 2-64R-R11 JKG
See: Emission Control Systems/California Models
- Calibration 2-64S-R11 JKH
See: Emission Control Systems/California Models
- Calibration 3-64G-R00 JKZ
See: Emission Control Systems/Federal (49 States)

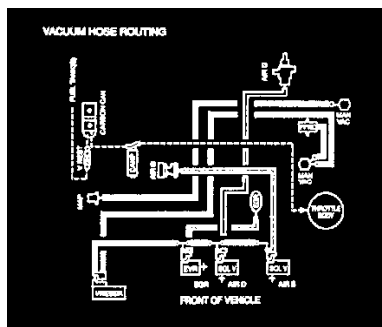
Calibration 3-64G-R00 JLA

See: Emission Control Systems/Canada

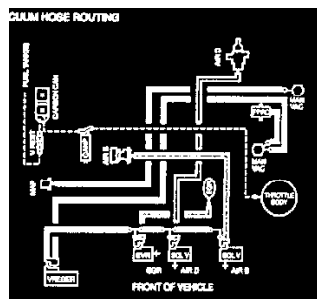
Calibration 3-64G-R00 JLB

See: Emission Control Systems/50 States

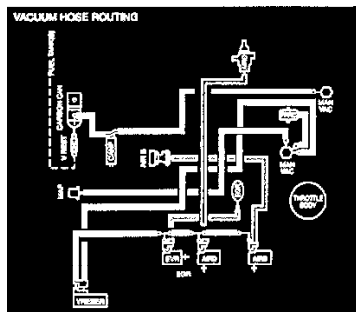
Canada



Calibration 2-64E-R11 JKD



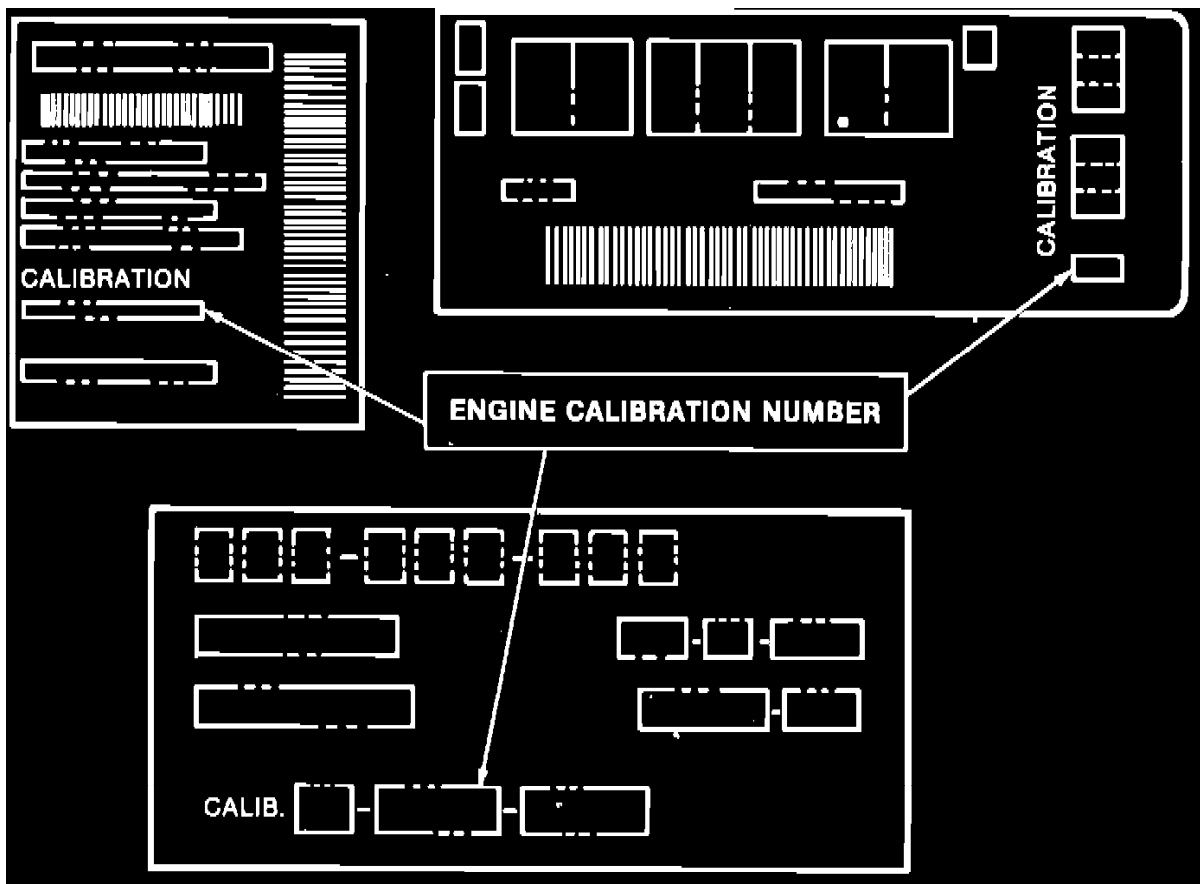
Calibration 2-64H-R11 JKD



Calibration 3-64G-R00 JLA

The first choice for an emissions vacuum diagram is the underhood sticker, presumably if you are reading this, the underhood sticker is not available to you, the calibration code will help.

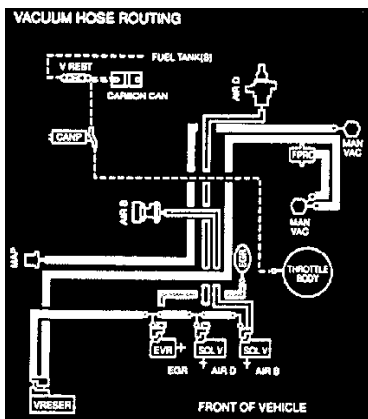
Note: Suggest to your customer that they contact the manufacturer to get a replacement underhood sticker.



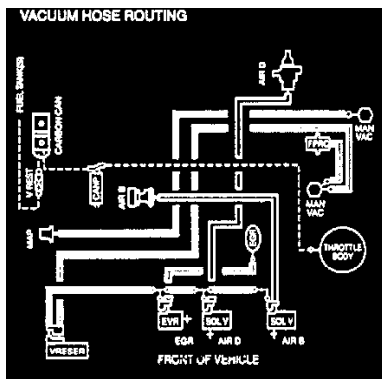
Engine Code Information Label

The calibration code sticker will be located on the driver's door or door pillar and will describe the emissions, for a listing of calibration codes, please refer to the Alphabetical Index. See: Emission Control Systems/Alphabetical Index For a sample underhood sticker (VECI Decal) refer to emissions systems Application and ID. See: Powertrain Management/Emission Control Systems/Application and ID

California Models



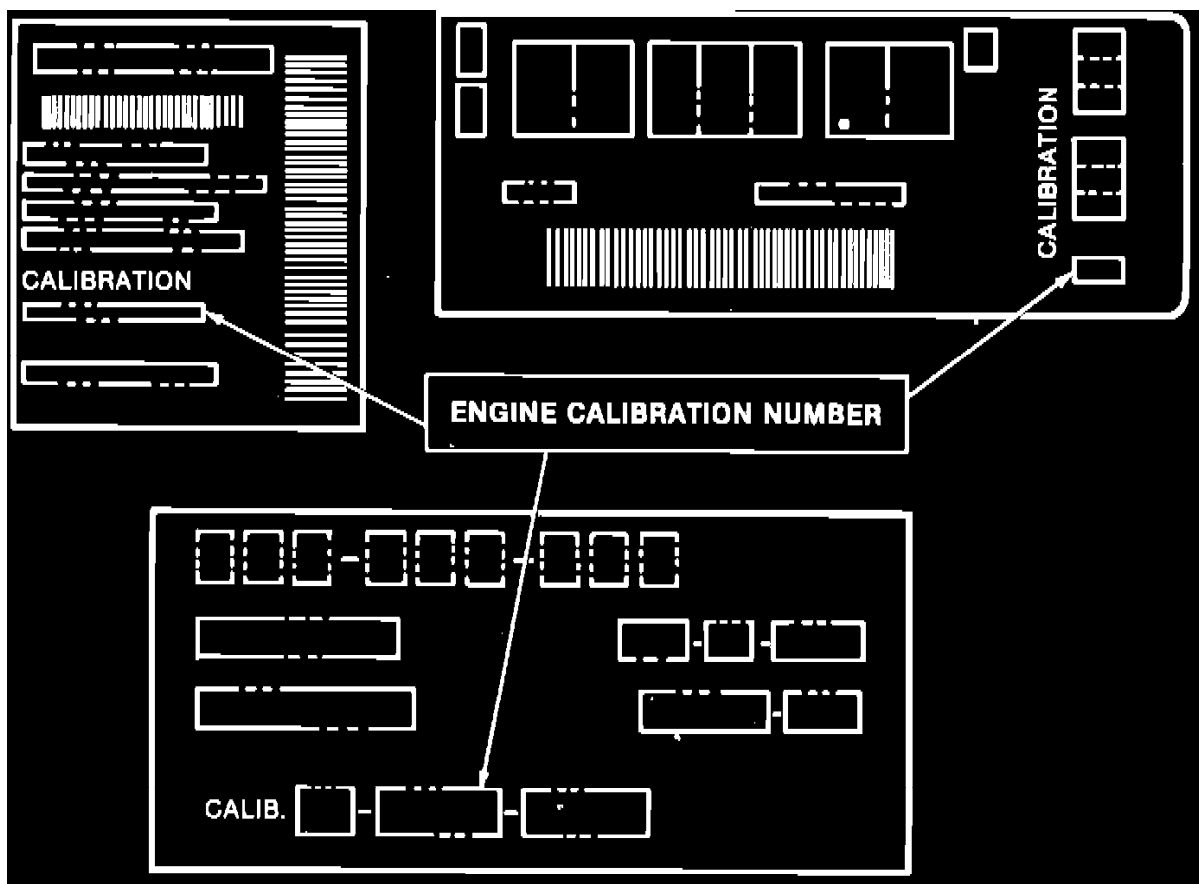
Calibration 2-64R-R11 JKG



Calibration 2-64S-R11 JKH

The first choice for an emissions vacuum diagram is the underhood sticker, presumably if you are reading this, the underhood sticker is not available to you, the calibration code will help.

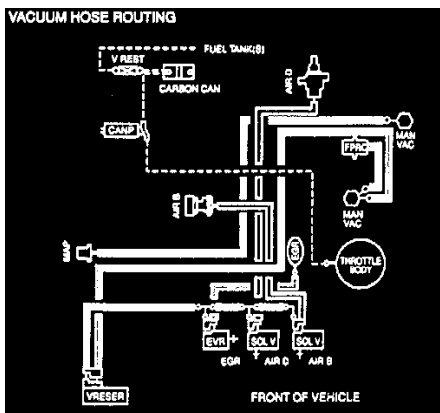
Note: Suggest to your customer that they contact the manufacturer to get a replacement underhood sticker.



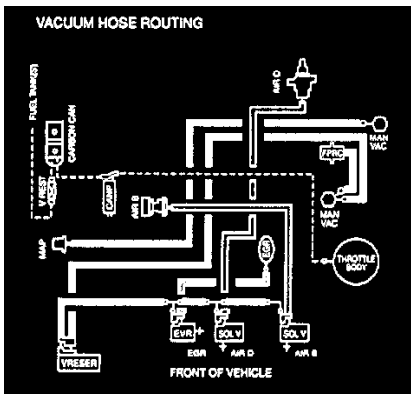
Engine Code Information Label

The calibration code sticker will be located on the driver's door or door pillar and will describe the emissions, for a listing of calibration codes, please refer to the Alphabetical Index. See: Emission Control Systems/Alphabetical Index For a sample underhood sticker (VECI Decal) refer to emissions systems Application and ID. See: Powertrain Management/Emission Control Systems/Application and ID

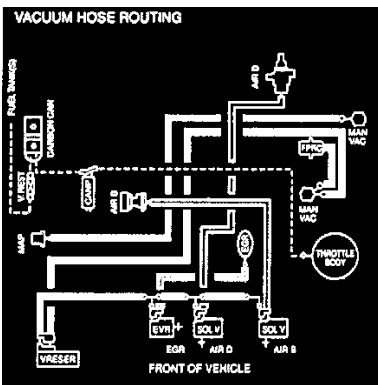
50 States



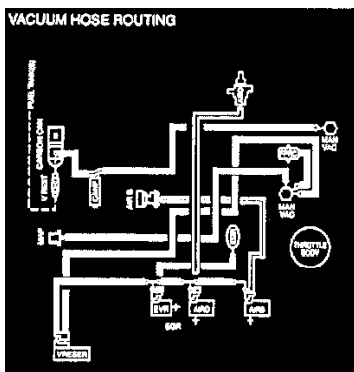
Calibration 2-64K-R11 JKJ



Calibration 2-64E-R11 JKF



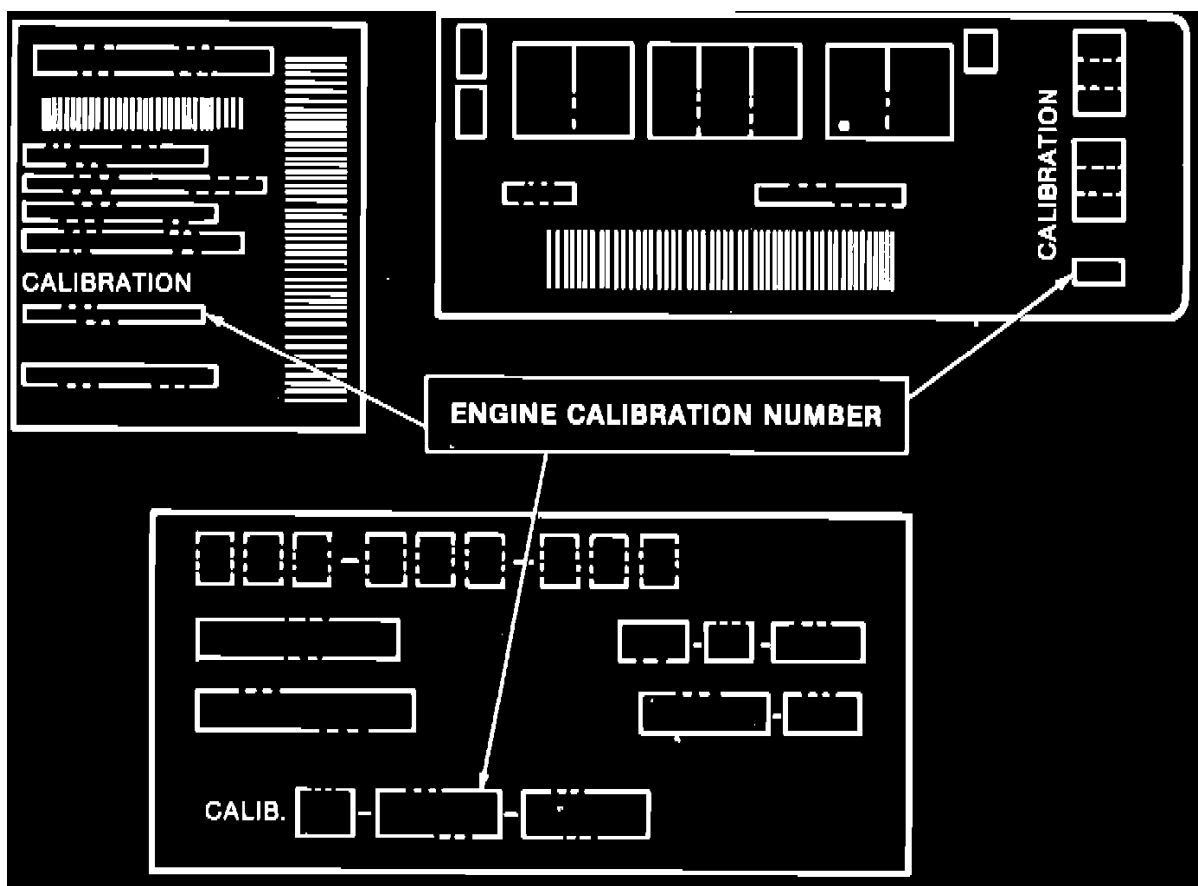
Calibration 2-64H-R11 JKF



Calibration 3-64G-R00 JLB

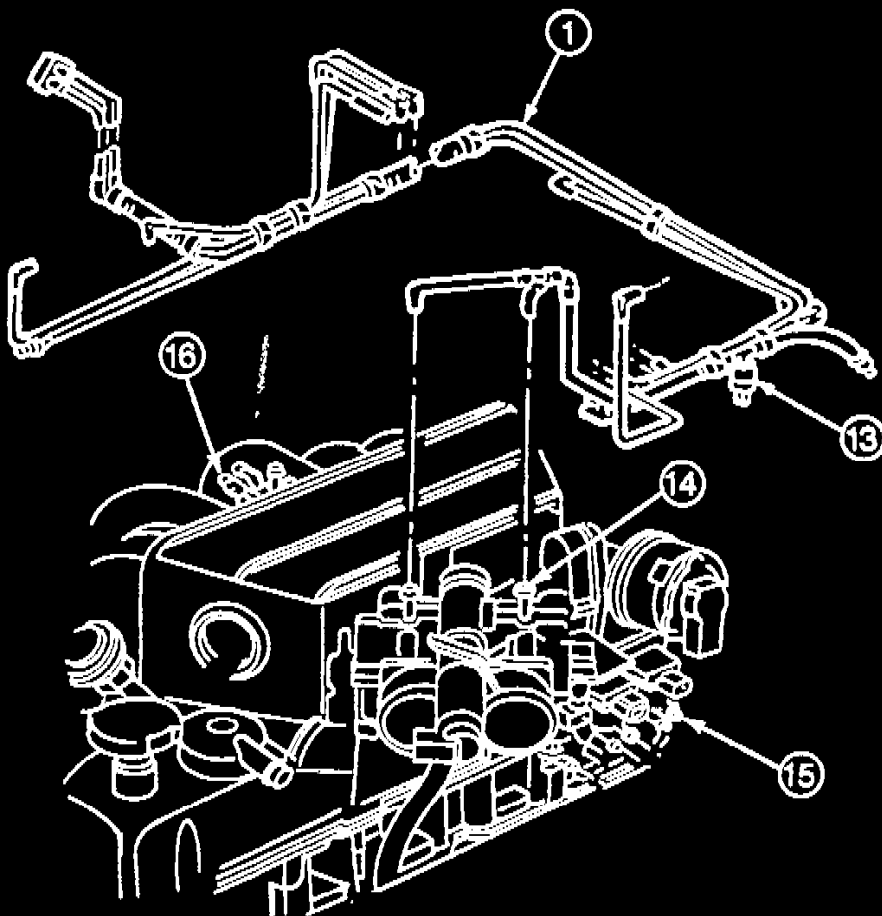
The first choice for an emissions vacuum diagram is the underhood sticker, presumably if you are reading this, the underhood sticker is not available to you, the calibration code will help.

Note: Suggest to your customer that they contact the manufacturer to get a replacement underhood sticker.

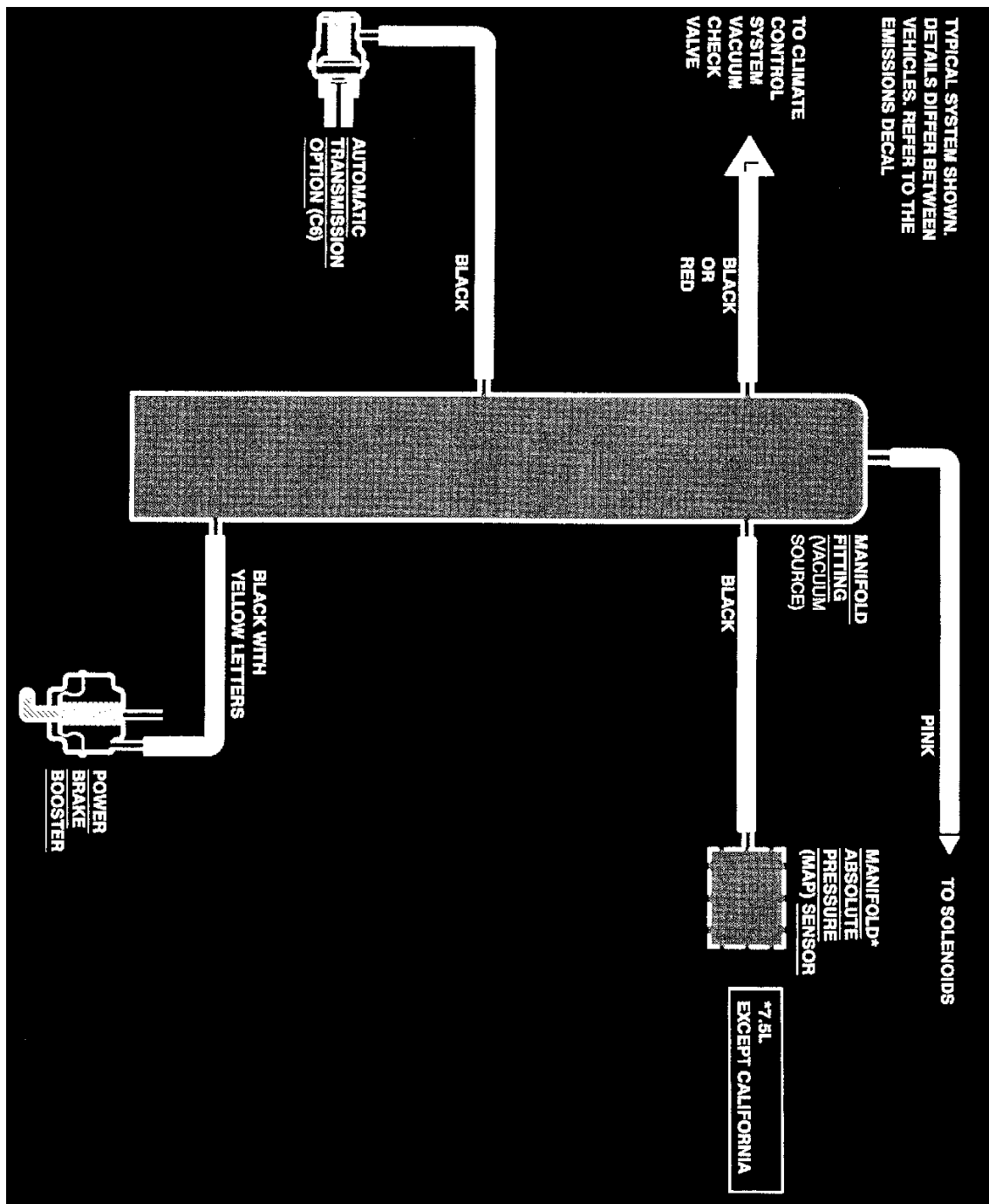


Engine Code Information Label

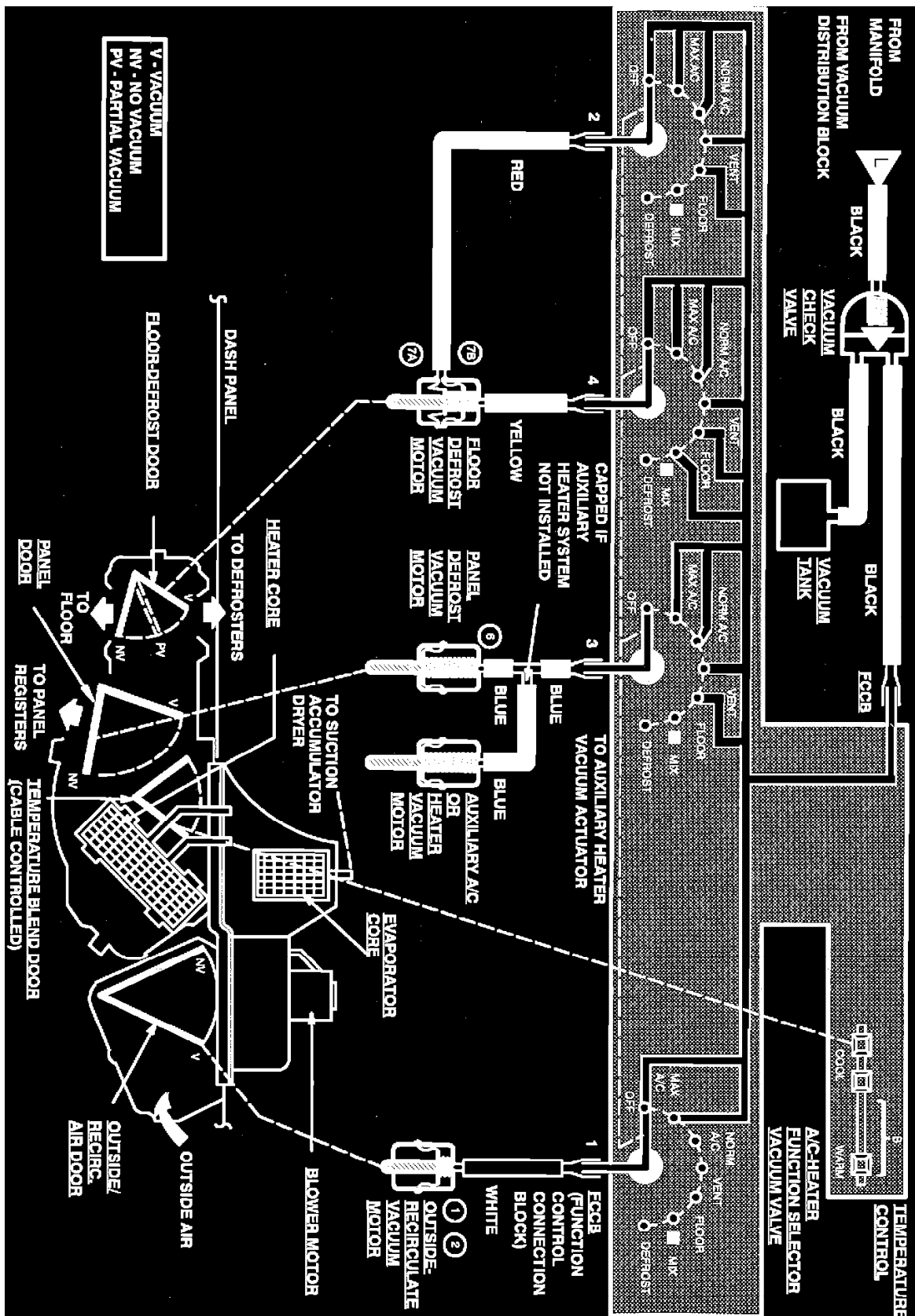
The calibration code sticker will be located on the driver's door or door pillar and will describe the emissions, for a listing of calibration codes, please refer to the Alphabetical Index. See: Emission Control Systems/Alphabetical Index For a sample underhood sticker (VECI Decal) refer to emissions systems Application and ID. See: Powertrain Management/Emission Control Systems/Application and ID



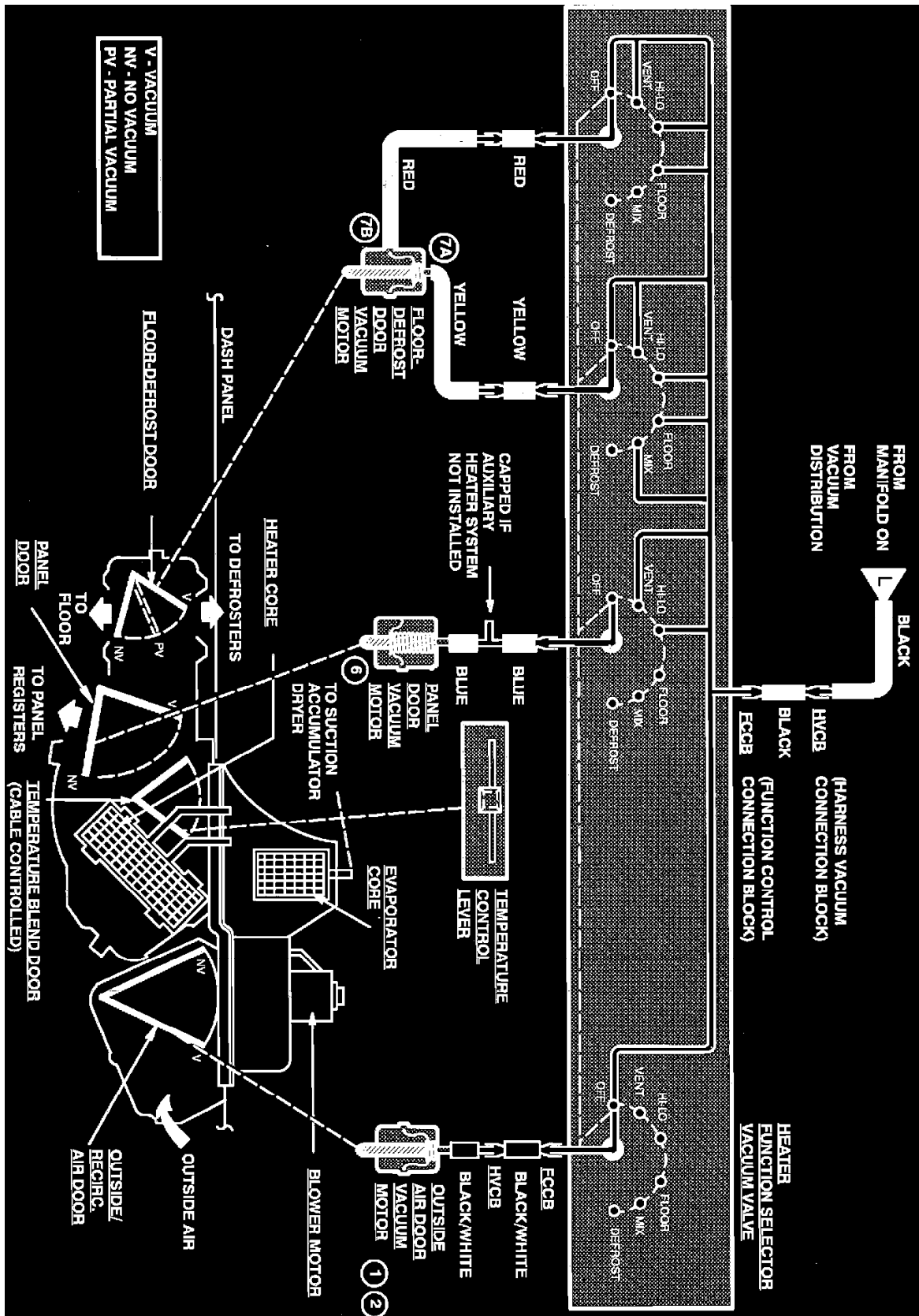
Item	Part Number	Description
1	9E498	Main Emission Vacuum Control Connector
10	9K328	Fuel Tank Vapor Hose (Part of 9S298 Organizer Assembly, Refer to Fuel Line Installation Illustration This Section)
11		Screw
12		Screw
13	9C916	Assembly (Used On: E-150 — E-350 49 State, Canada, High Altitude with C-8 Transmission HD-350 with C8 Transmission. 49 State and Canada)
14	9E926	Throttle Body Assembly
15	9J459	Choke Diaphragm
16	9A474	Intake Manifold Vacuum Outlet Fitting and Cap



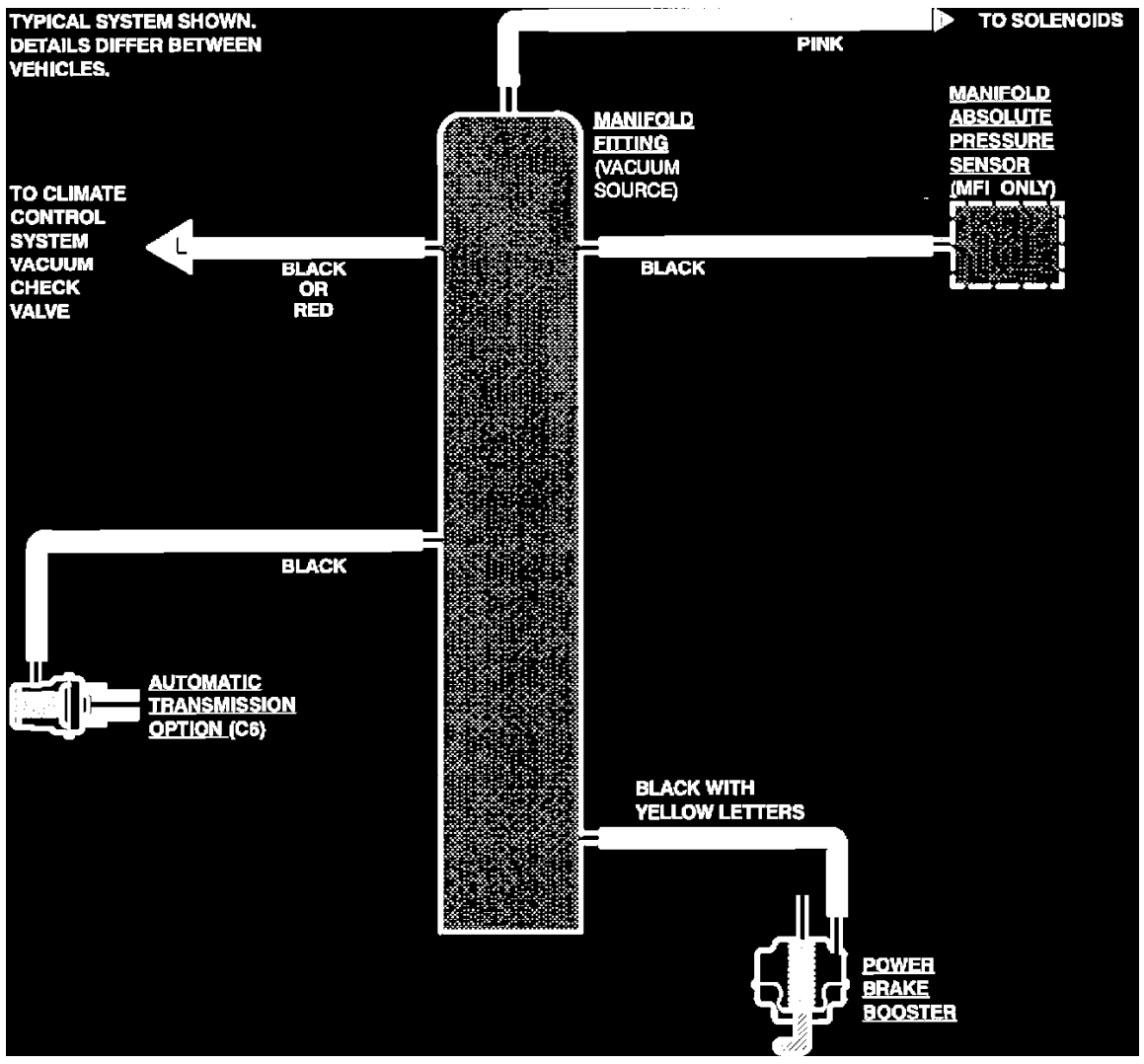
Vacuum Diagram



A/C-Heater



Heater



Vacuum Distribution