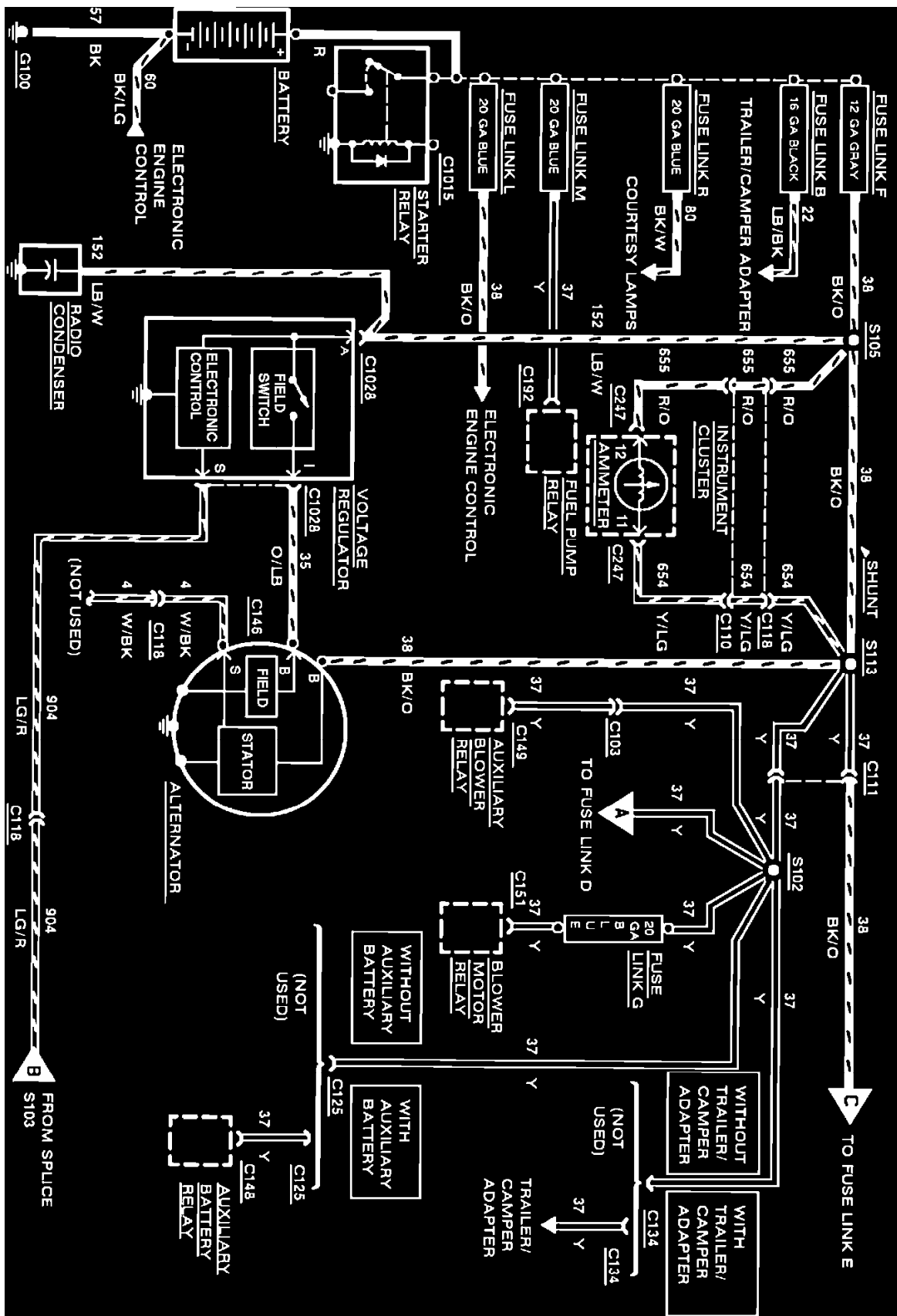
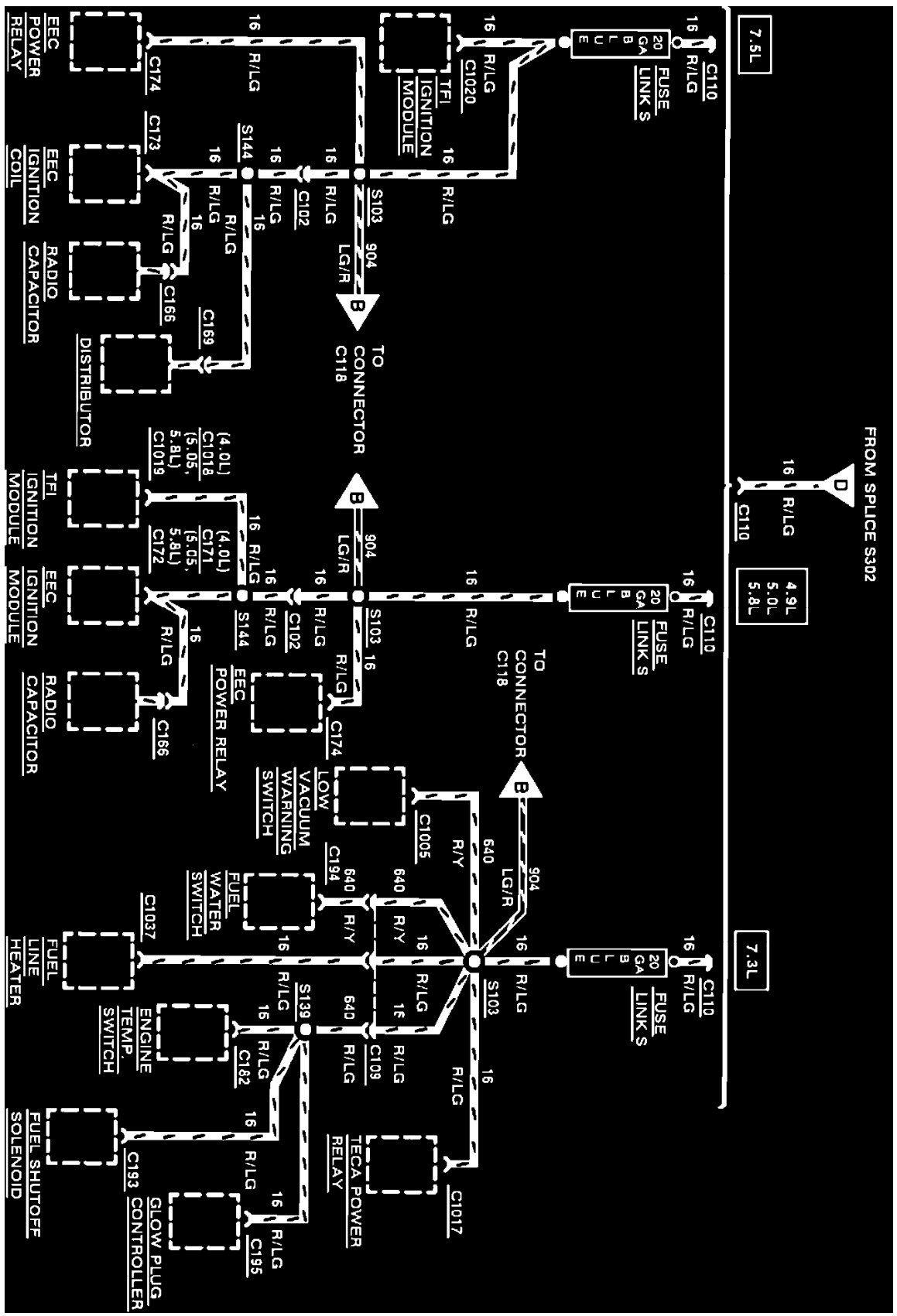


Power and Ground Distribution: Electrical Diagrams

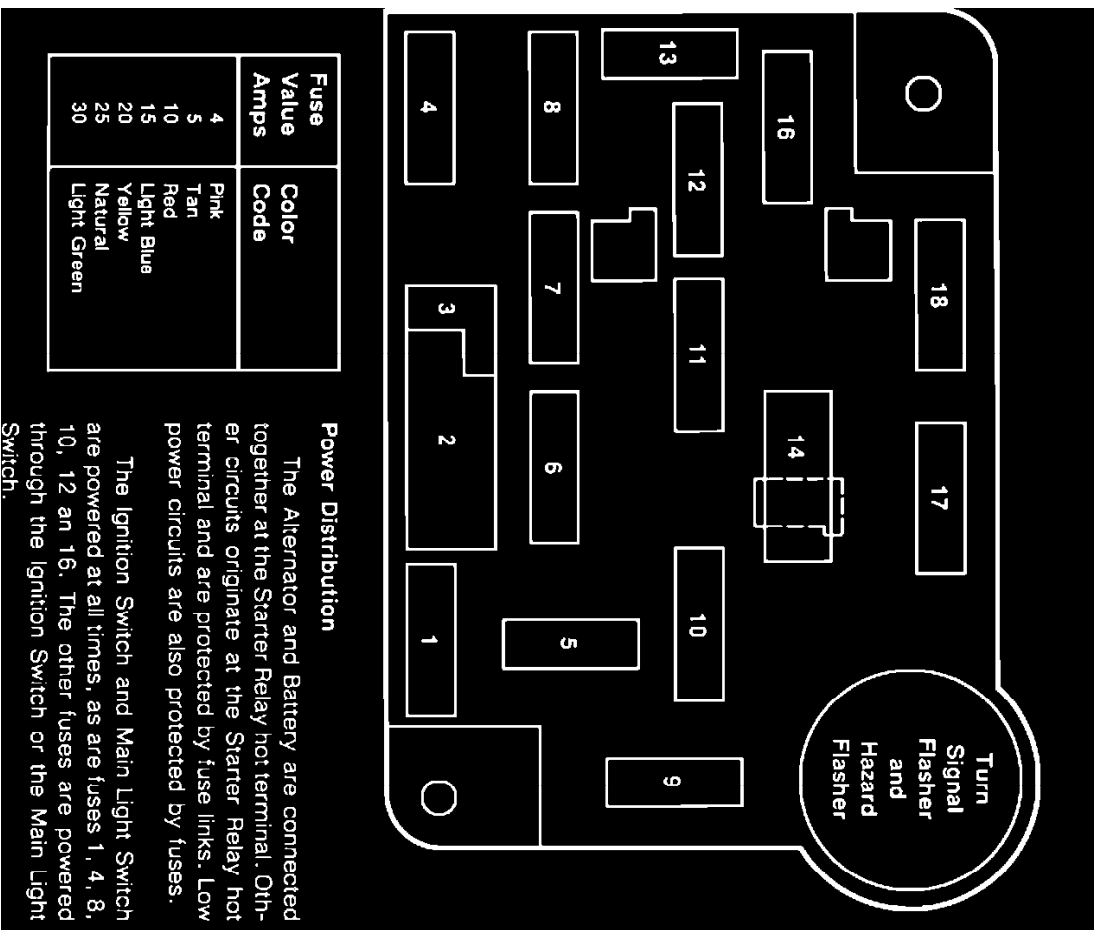
Power Distribution



Power Distribution (With Ammeter)



Power Distribution (Fuse Link S)



Fuse Value Amps	Color Code
4	Pink
5	Tan
10	Red
15	Light Blue
20	Yellow
25	Natural
30	Light Green

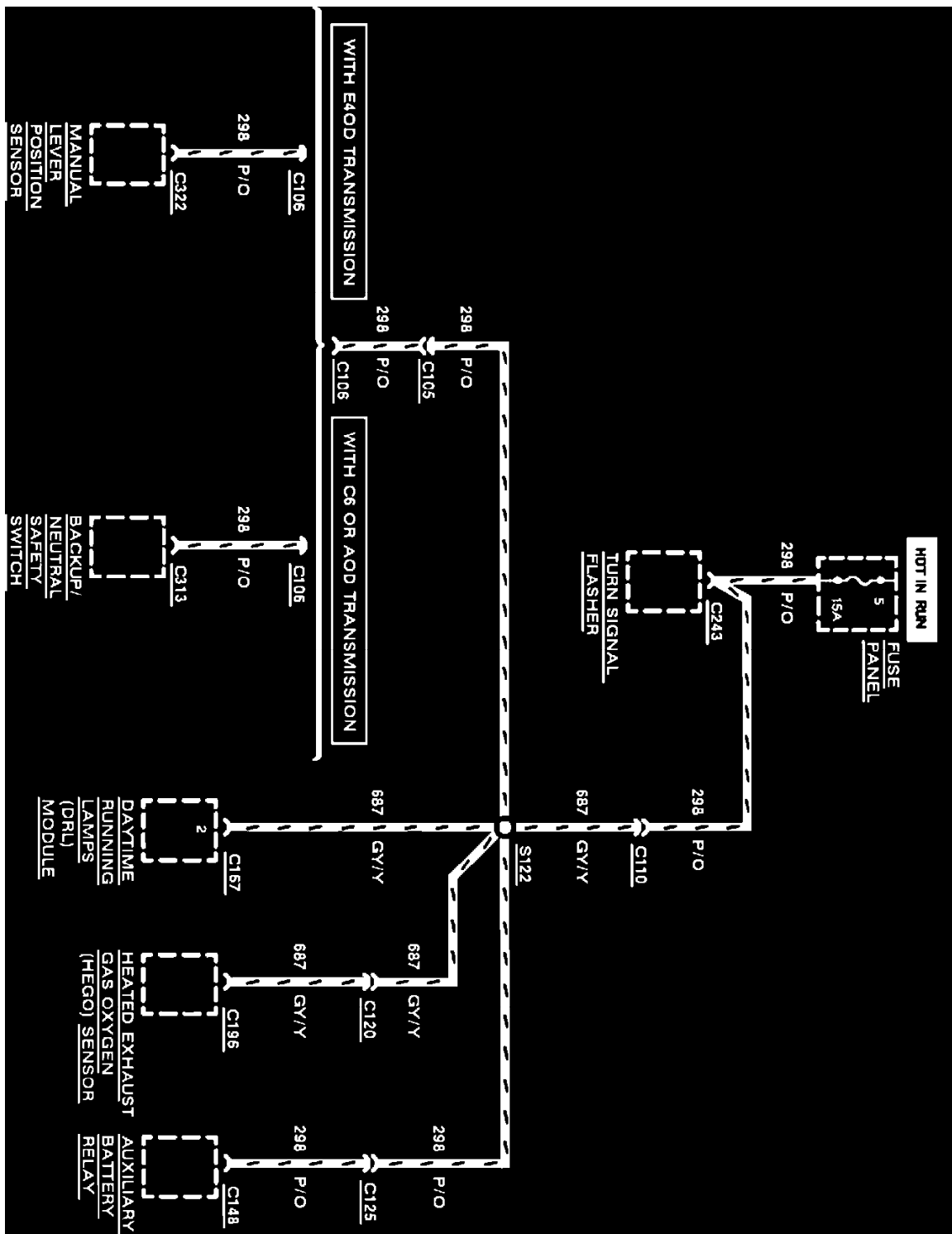
Power Distribution

The Alternator and Battery are connected together at the Starter Relay hot terminal. Other circuits originate at the Starter Relay hot terminal and are protected by fuse links. Low power circuits are also protected by fuses.

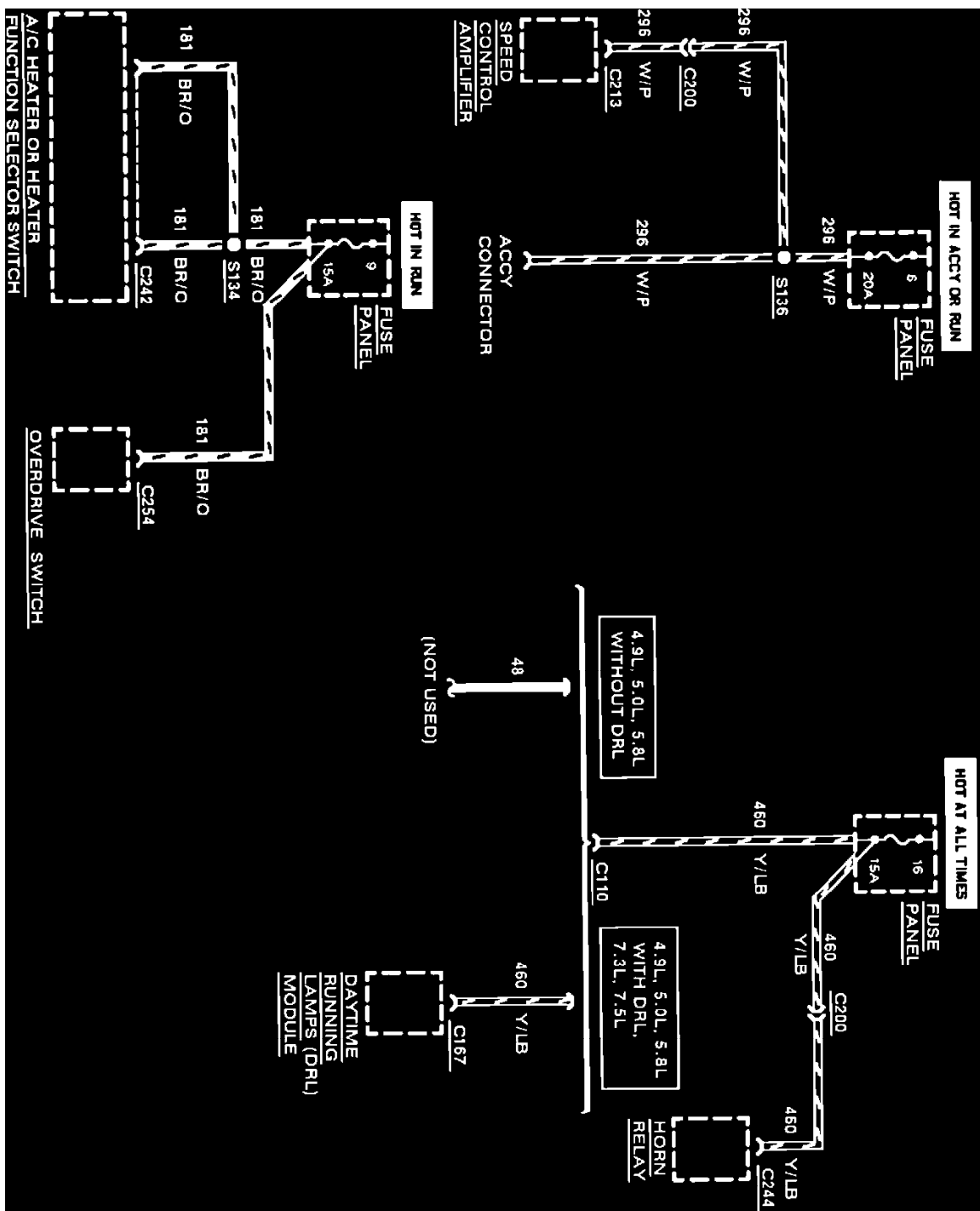
The Ignition Switch and Main Light Switch are powered at all times, as are fuses 1, 4, 8, 10, 12 and 16. The other fuses are powered through the Ignition Switch or the Main Light Switch.

Fuse Position	Amps	Circuits Protected
1	15	Stop/Hazard Lamp, Speed Control
2	7.5 c. b.	Windshield Wiper/Washer, Interval Wiper/Washer
3	—	(Not Used)
4	15	Instrument Panel Illumination, Running Lamps, Radio/Clock Illumination, Heater And A/C Control Illumination
5	15	Turn Signal, Backup Lamps, Dual Battery Relay Coil, Daytime Running Lamps
6	20	Speed Control, Customer Convenience Plug (located above fuse panel-Hot in RUN or ACCY)
7	—	(Not Used)
8	15	Door Lamp, Map Lamp, Radio Memory, Power Door Lock Relays, Cargo Lamp
9	15	A/C Heater Blower Motor Relay Coil, A/C Clutch, Overdrive Cancel
10	20	Cigar Lighter
11	15	Radio and Clock, Premium Sound
12	20 c. b.	Power Door Locks
13	5	Instrument Panel Illumination Lamps
14	20 c. b.	Power Windows
15	—	(Not Used)
16	15	Horn, Speed Control, Daytime Running Lamps
17	20	Anti-lock Brakes
18	15	Instrument Panel Warning Lamps, Warning Chime, Diesel Fuel Tank Selector Switch (B+)

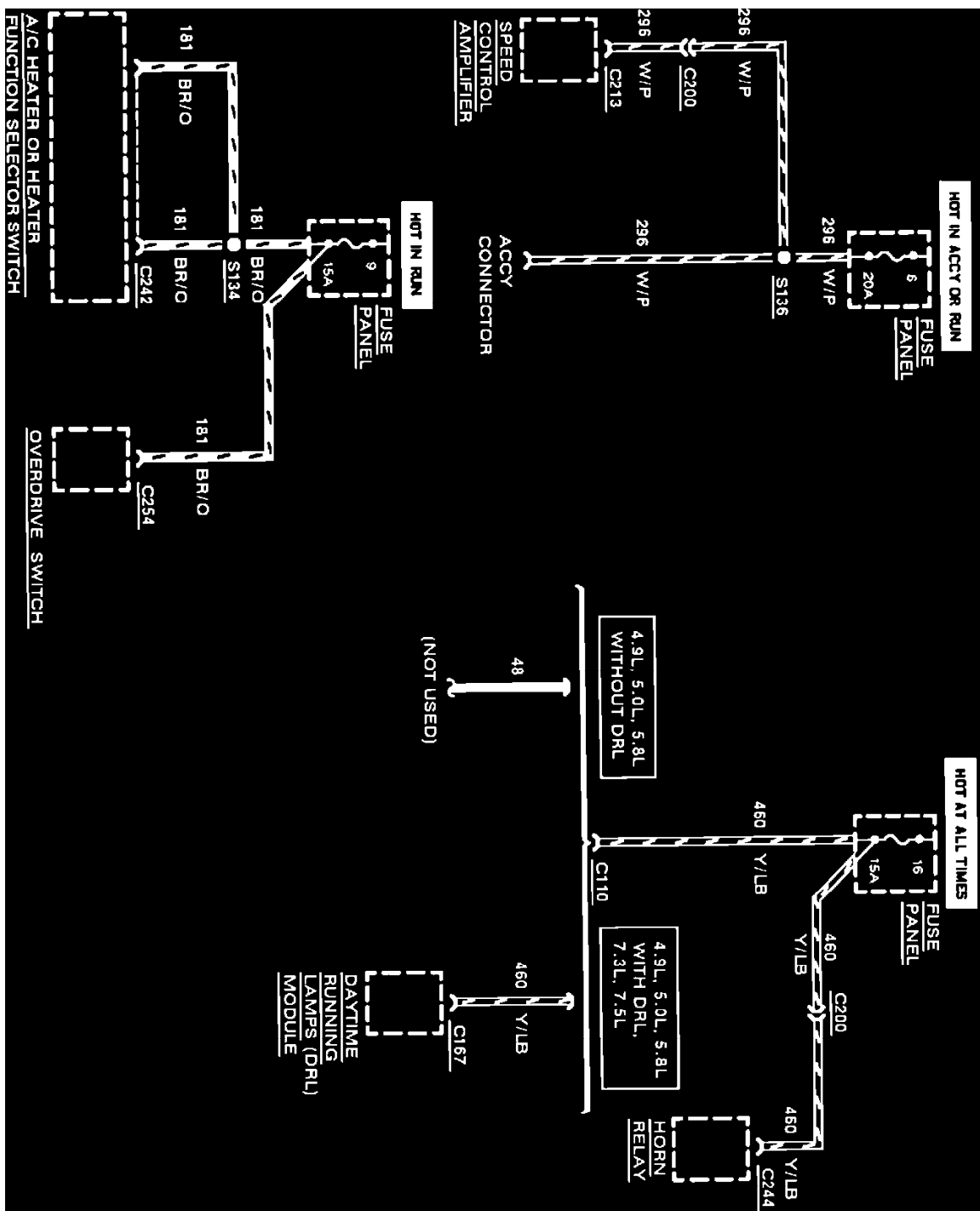
Fuse Panel



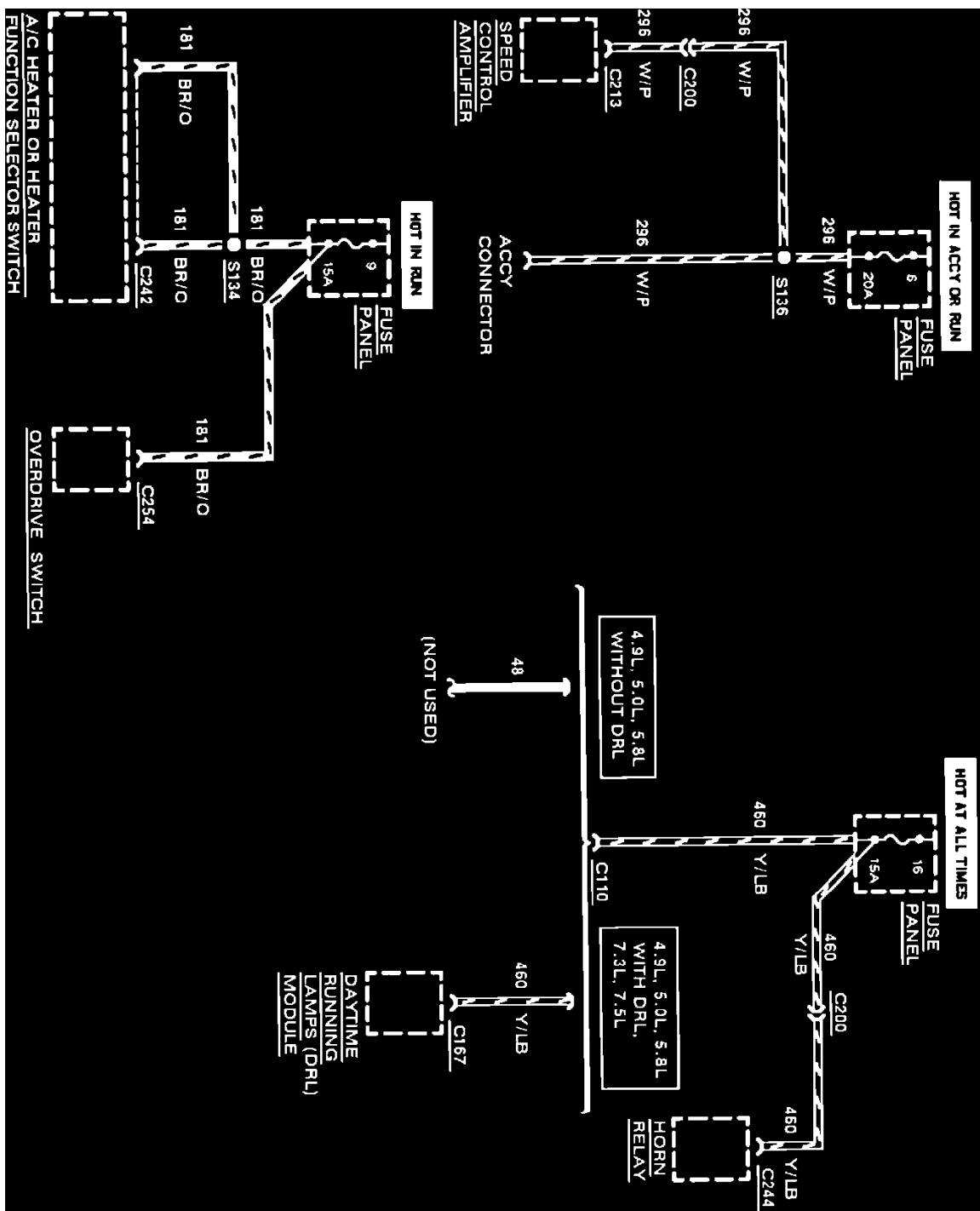
Power Distribution (Fuse 5)



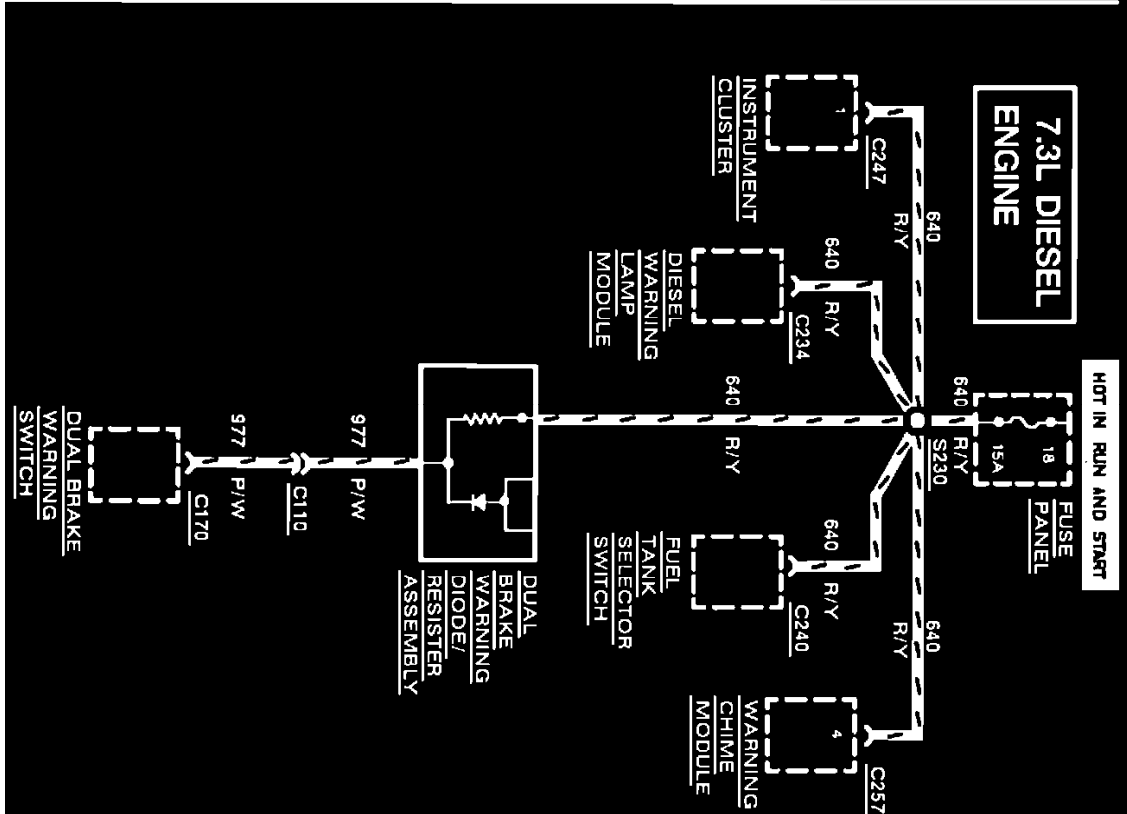
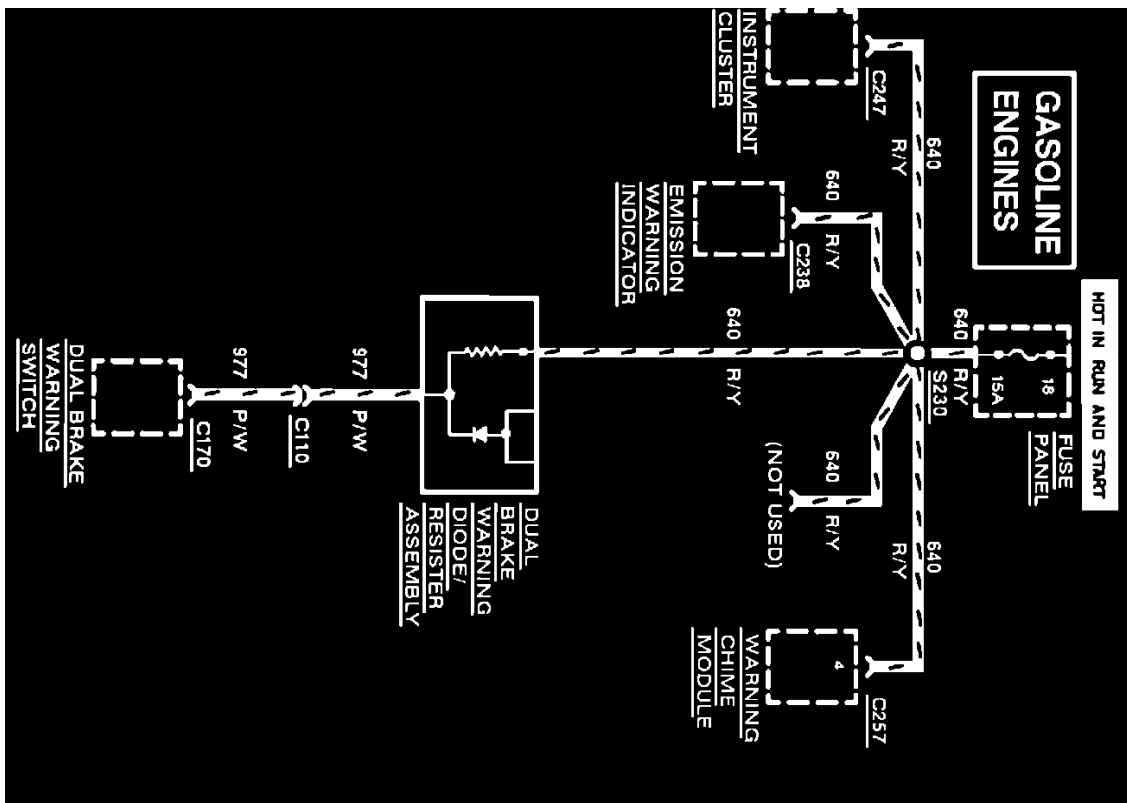
Power Distribution (Fuses 6, 9, And 16)



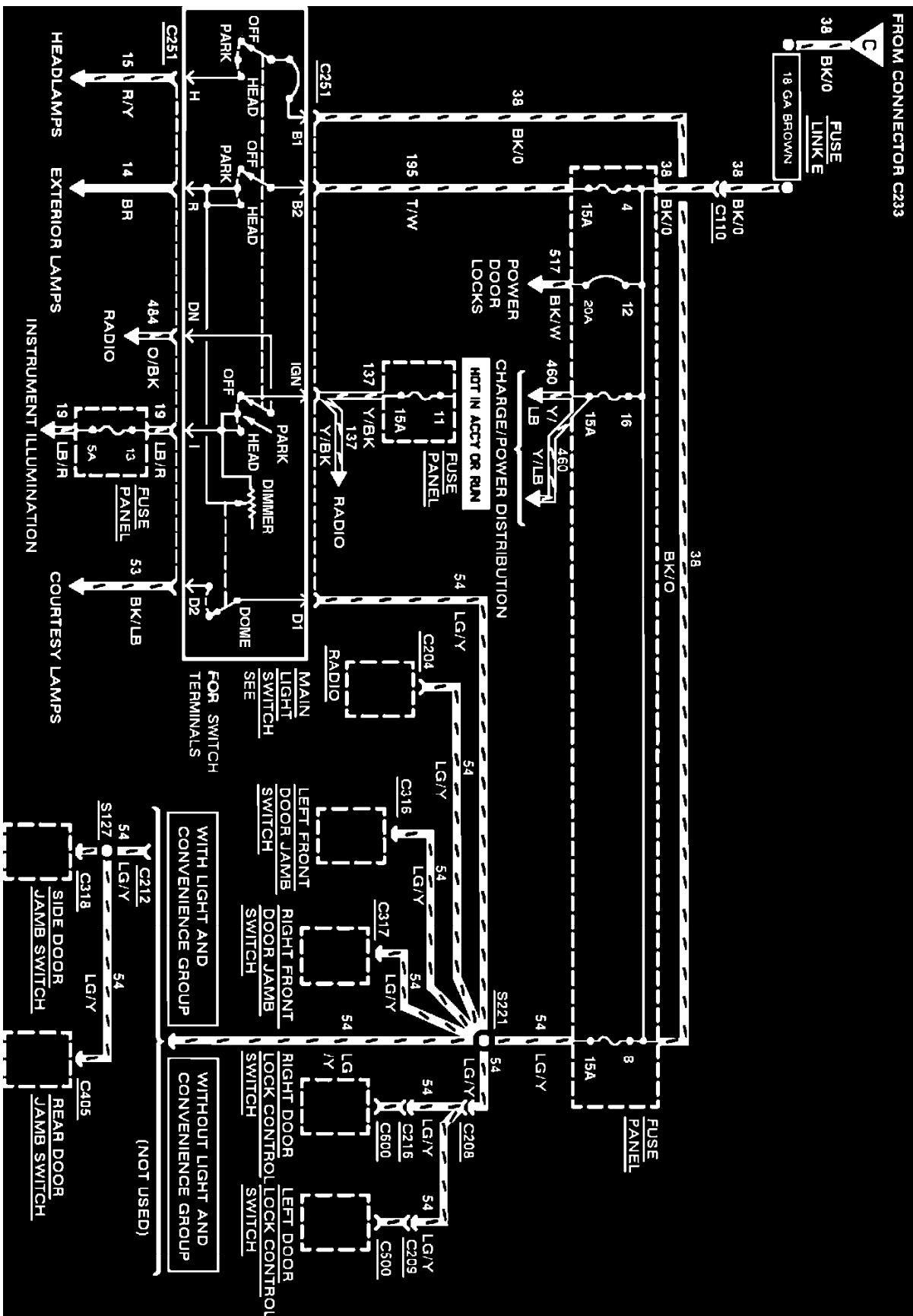
Power Distribution (Fuses 6, 9, And 16)



Power Distribution (Fuses 6, 9, And 16)



Power Distribution (Fuse 18)



Power Distribution (Main Light Switch)