

# Power and Ground Distribution: Electrical Diagrams

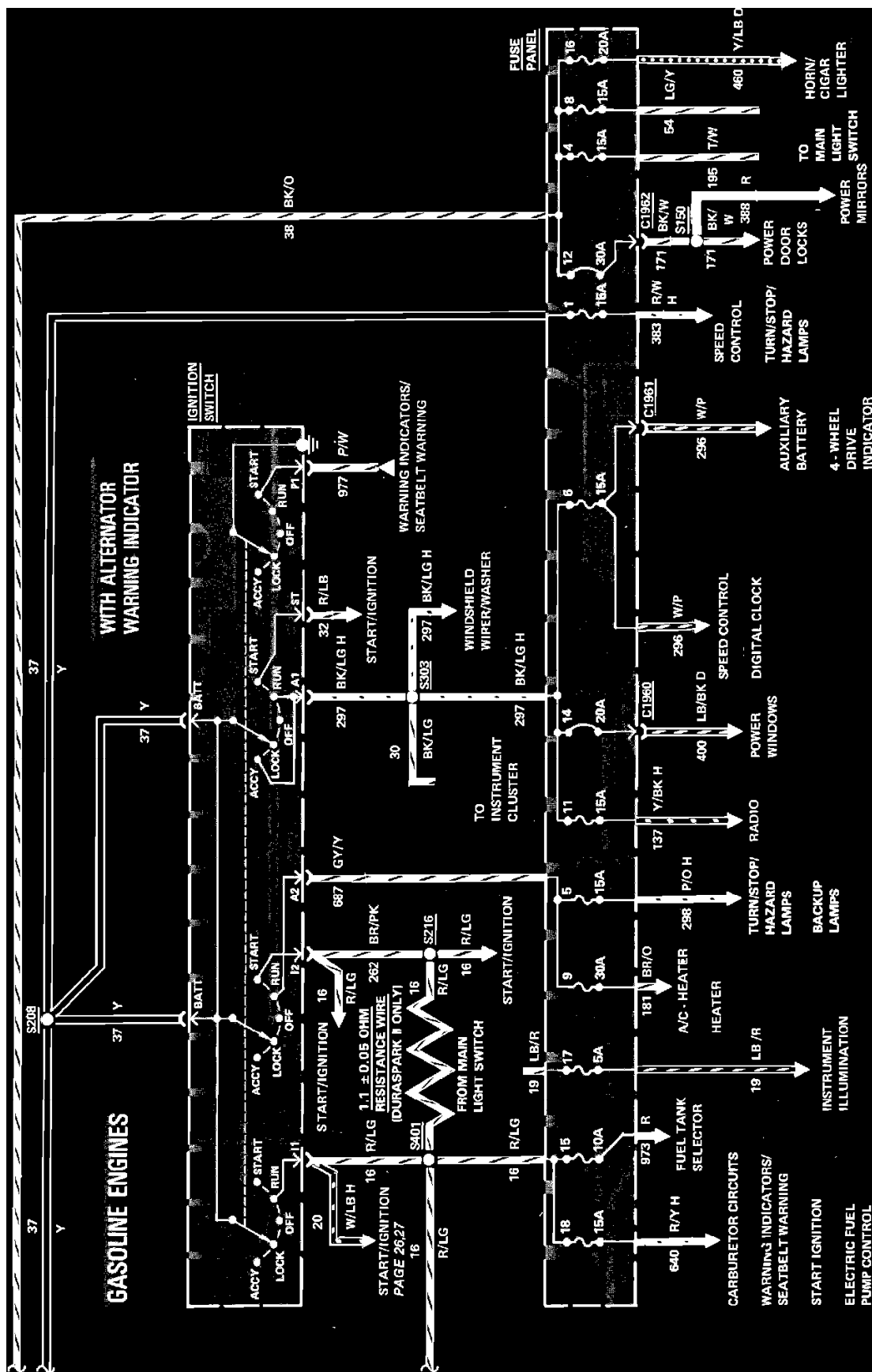


Fig. 28 Charging system & power distribution wiring circuit (Part 2 of 2), 1984 Bronco & F100-350 with gas engine less gauges



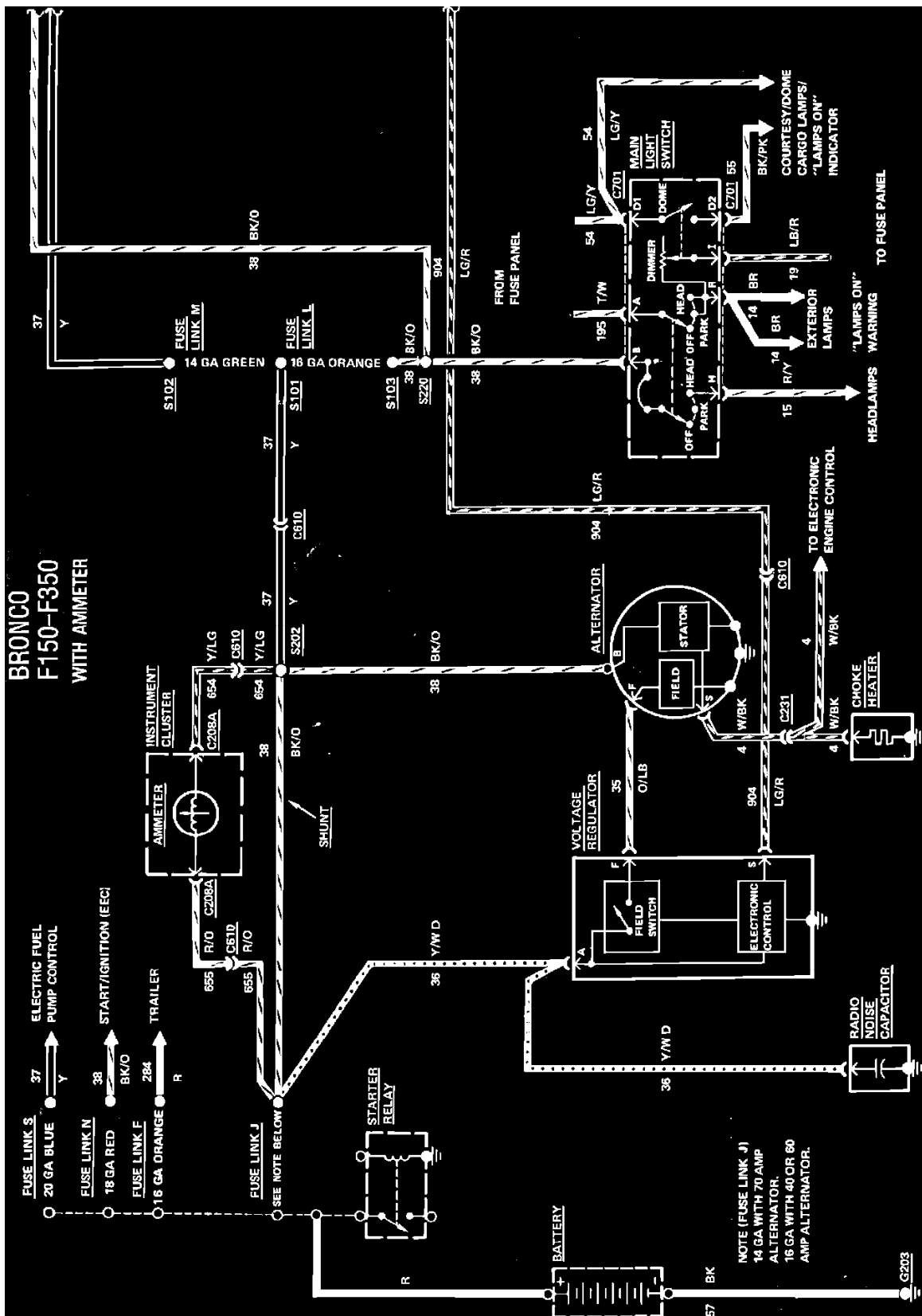
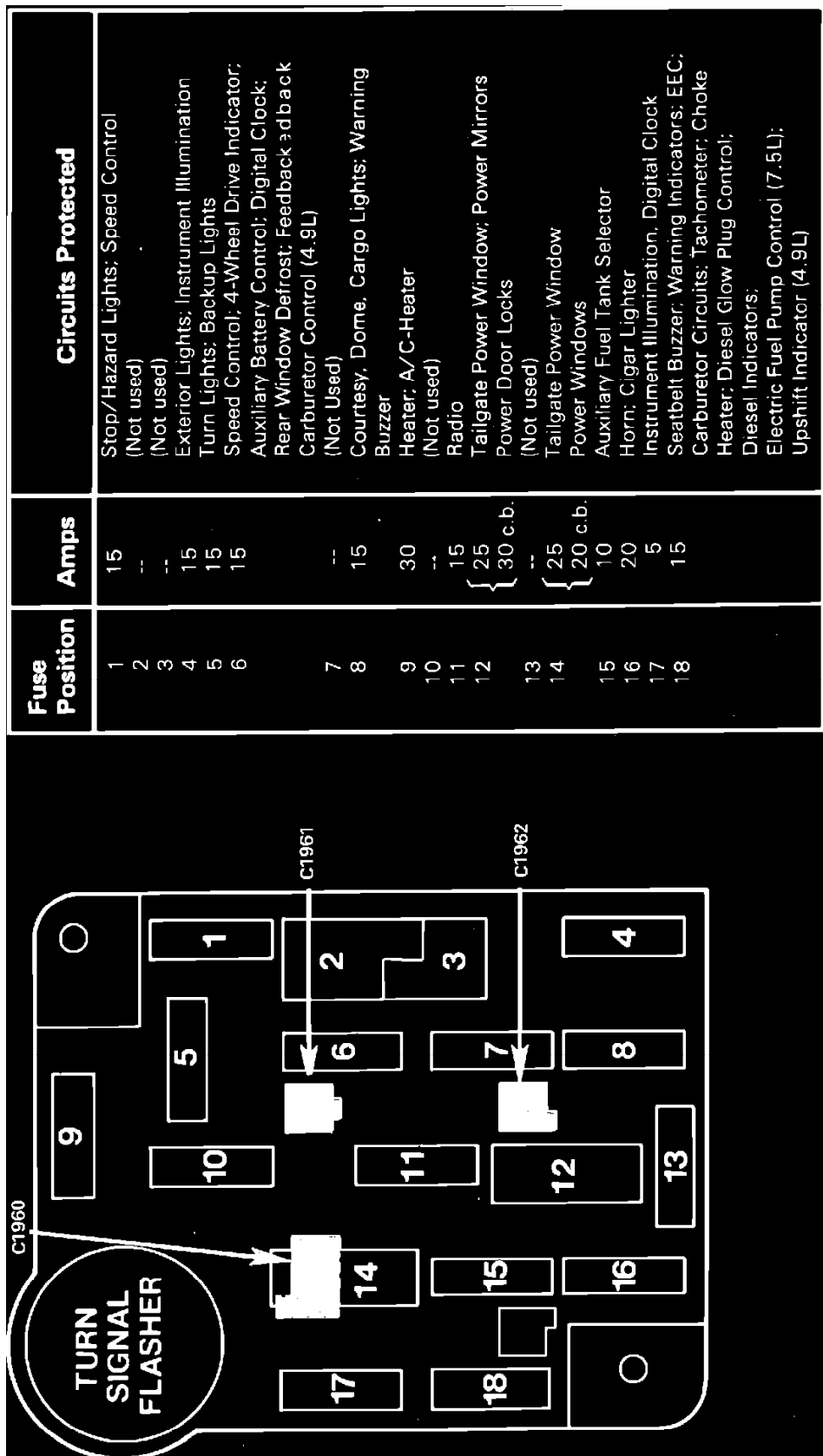


Fig. 29 Charging system & power distribution wiring circuit (Part 1 of 2). 1984 Bronco & F100-350 with gas engine & gauges





Fuse Position	Amps	Circuits Protected
1	15	Stop/Hazard Lights; Speed Control (Not used)
2	--	(Not used)
3	--	Exterior Lights; Instrument Illumination
4	15	Turn Lights; Backup Lights
5	15	Speed Control; 4-Wheel Drive Indicator; Auxiliary Battery Control; Digital Clock;
6	15	Rear Window Defrost; Feedback and back Carburetor Control (4.9L)
7	--	(Not Used)
8	15	Courtesy, Dome, Cargo Lights; Warning Buzzer
9	30	Heater; A/C-Heater
10	--	(Not used)
11	15	Radio
12	{ 25 30 c.b.	Tailgate Power Window; Power Mirrors
13	--	Power Door Locks
14	{ 25 20 c.b.	(Not used) Tailgate Power Window
15	10	Power Windows
16	20	Auxiliary Fuel Tank Selector
17	5	Horn; Cigar Lighter
18	15	Instrument Illumination, Digital Clock
		Seatbelt Buzzer; Warning Indicators; EEC;
		Carburetor Circuits; Tachometer; Choke
		Heater; Diesel Glow Plug Control;
		Diesel Indicators;
		Electric Fuel Pump Control (7.5L);
		Upshift Indicator (4.9L)

Fig. 1 Fuse Panel. 1983-84 Bronco & F100-350