

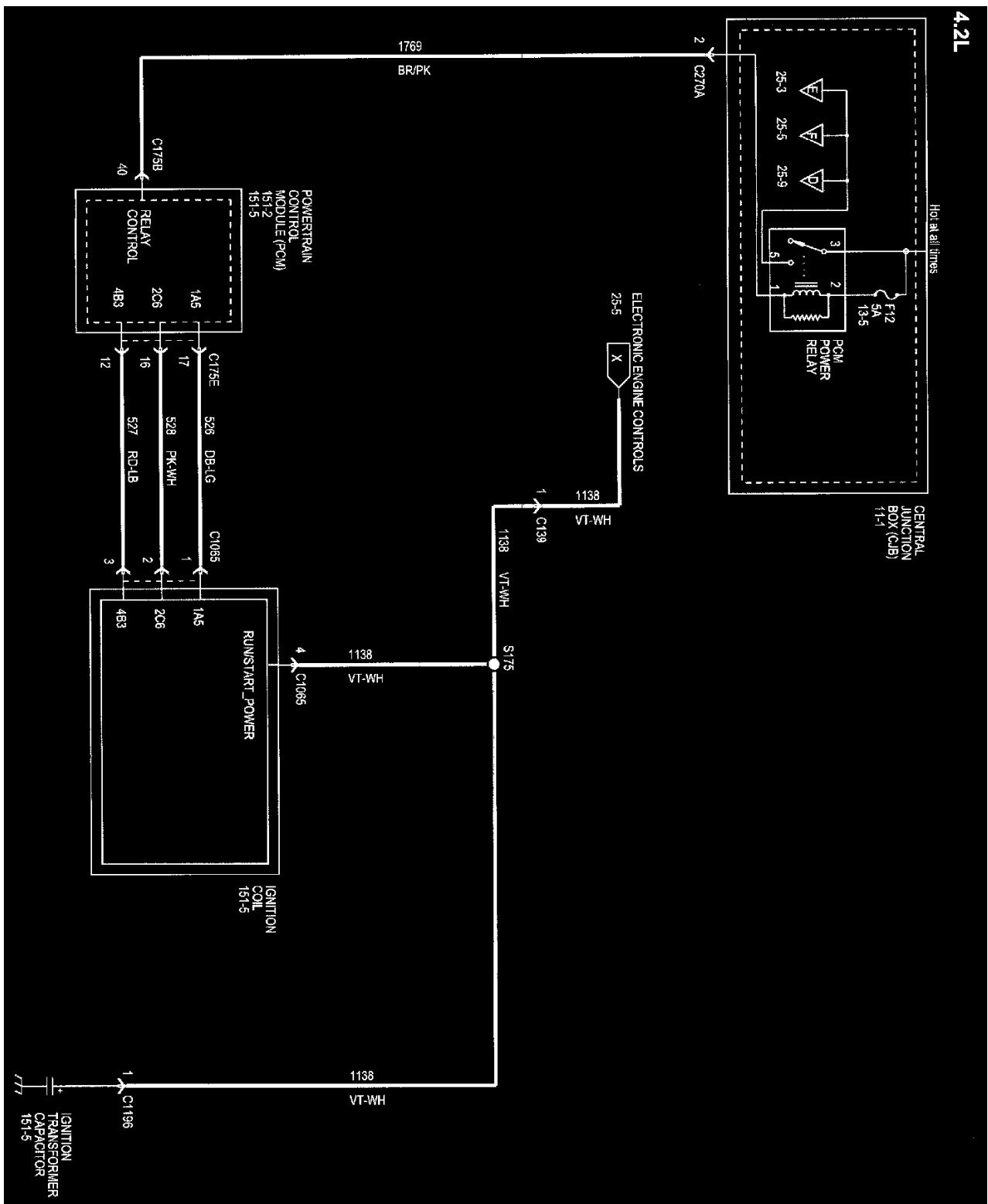
Vehicle: Electrical Diagrams

Powertrain Management

| | | | |
|--|------------------------------------|---|--|
| 4R75E Transmission | 25-5 | Fuel Pump Driver Module | 25-7 |
| A/C Pressure Transducer Sensor | 25-6 | Fuel Pump Module | 25-7 |
| Audio Unit | 25-8 | Fuel Pump Relay | 25-7 |
| Auxiliary Relay Box 1 | 25-3 | Fuel Rail Pressure/Temperature Sensor | 25-4 |
| Camshaft Position Sensor | 25-3 | Fuel Tank Pressure Transducer Sensor | 25-7 |
| Central Junction Box (CJB) | 25-1, 25-2, 25-3, 25-5, 25-7, 25-9 | Heated Oxygen Sensors (HO2S) | 25-3, 25-5 |
| Clutch Pedal Position (CPP) Sensor | 25-4 | Heated Positive Crankshaft Ventilation (PCV) Valve | 25-3 |
| Crankshaft Position Sensor | 25-6 | Ignition Coil | 25-1 |
| Cylinder Head Temperature Sensor | 25-4 | Inertia Fuel Shutoff (IFS) Switch | 25-7 |
| Digital Transmission Range (DTR) Sensor | 25-5 | Intake Manifold Runner Control (IMRC) | 25-4 |
| EGR System Module | 25-4 | Knock Sensor | 25-6 |
| Electronic Throttle Control (ETC) Module | 25-6 | Mass Air Flow/Intake Air Temperature (MAF/IAT) Sensor | 25-9 |
| Electronic Throttle Position Motor | 25-6 | Output Shaft Speed (OSS) Sensor | 25-5 |
| EVAP Canister Vent Control Solenoid | 25-3 | PCM Power Relay | 25-1 |
| Evaporative Emission (EVAP) Canister Purge Valve | 25-3 | Powertrain Control Module (PCM) | 25-1, 25-2, 25-3, 25-4, 25-5, 25-6, 25-7, 25-8, 25-9 |
| Fuel Injectors | 25-2 | Turbine Shaft Speed (TSS) Sensor | 25-5 |

25-1

PLEASE NOTE: Some diagrams may appear to be missing because of gaps in the number sequences. These "gaps" are actually for diagrams that do not apply to the vehicle model selected.



25-1

Next Diagram See: System Diagram/25-2

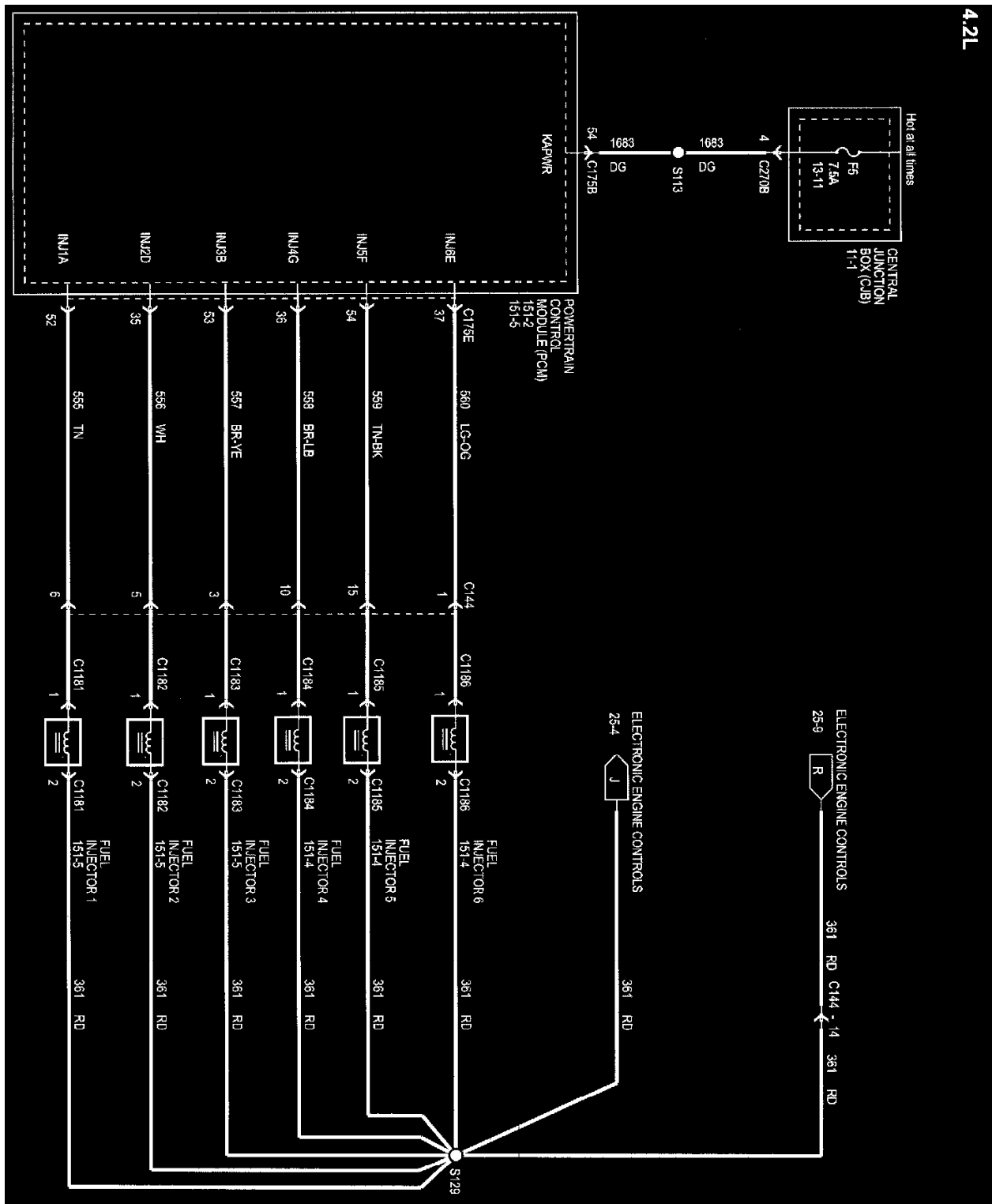
Diagrams: Other diagrams referred to by number (See Diagram #-#, etc.) within these diagrams can be found at **Diagrams By Number**. See: **Diagrams By Number**

Locations: Location Views (reference numbers starting with 151-) referred to within these diagrams can be found at **Component Location Views**. See: **Components/Component Location Views**

25-2

PLEASE NOTE: Some diagrams may appear to be missing because of gaps in the number sequences. These "gaps" are actually for diagrams that do not apply to the vehicle model selected.

4.2L



25-2

Next Diagram See: System Diagram/25-3

Previous Diagram See: System Diagram/25-1

Diagrams: Other diagrams referred to by number (See Diagram #-#, etc.) within these diagrams can be found at **Diagrams By Number**. See: **Diagrams By Number**

Locations: Location Views (reference numbers starting with 151-) referred to within these diagrams can be found at **Component Location Views**. See: **Components/Component Location Views**

25-3

PLEASE NOTE: Some diagrams may appear to be missing because of gaps in the number sequences. These "gaps" are actually for diagrams that do

Next Diagram See: System Diagram/25-6

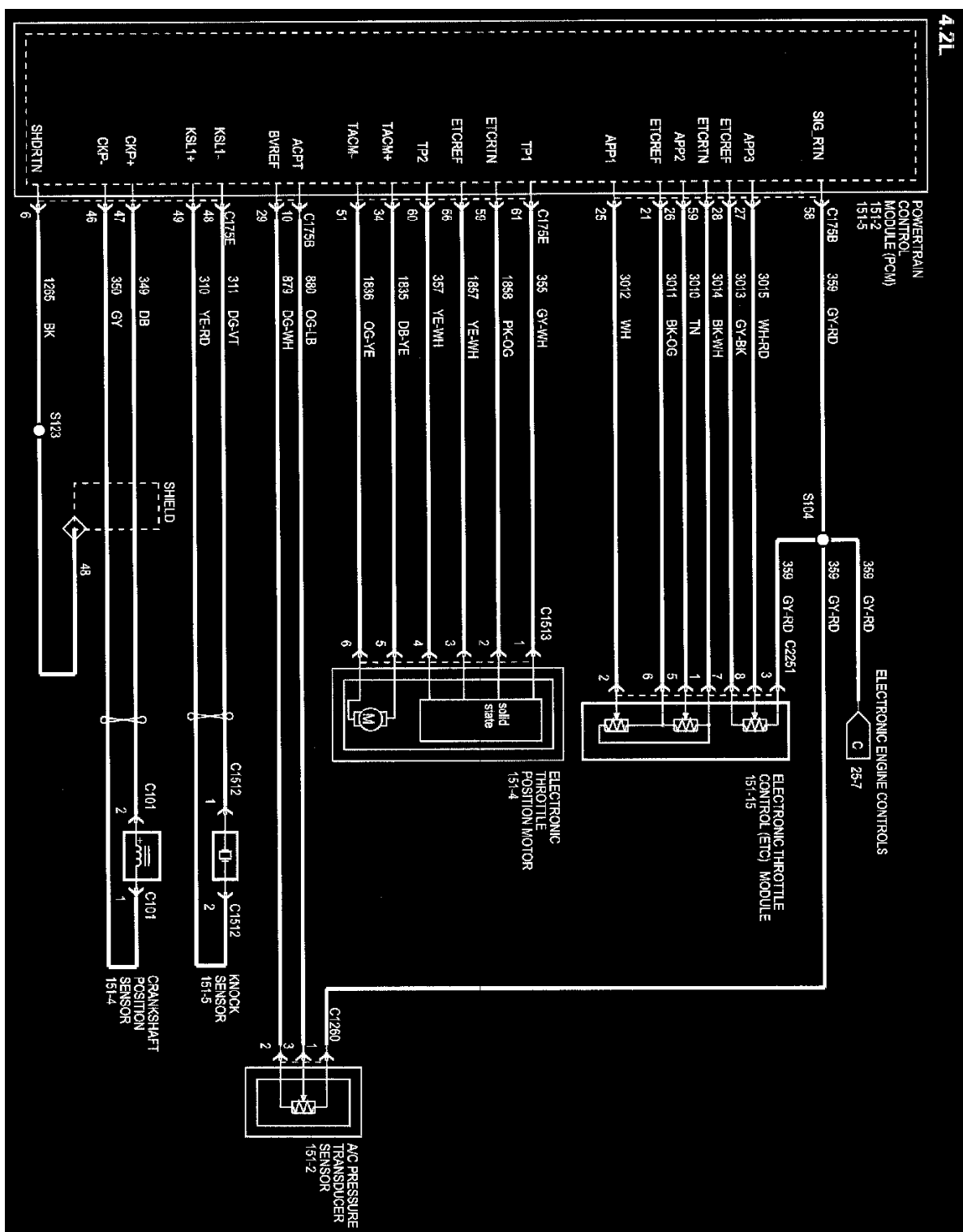
Previous Diagram See: System Diagram/25-4

Diagrams: Other diagrams referred to by number (See Diagram #-#, etc.) within these diagrams can be found at **Diagrams By Number**. See: **Diagrams By Number**

Locations: Location Views (reference numbers starting with 151-) referred to within these diagrams can be found at **Component Location Views**. See: **Components/Component Location Views**

25-6

PLEASE NOTE: Some diagrams may appear to be missing because of gaps in the number sequences. These "gaps" are actually for diagrams that do not apply to the vehicle model selected.



25-6

Next Diagram See: System Diagram/25-7

Previous Diagram See: System Diagram/25-5

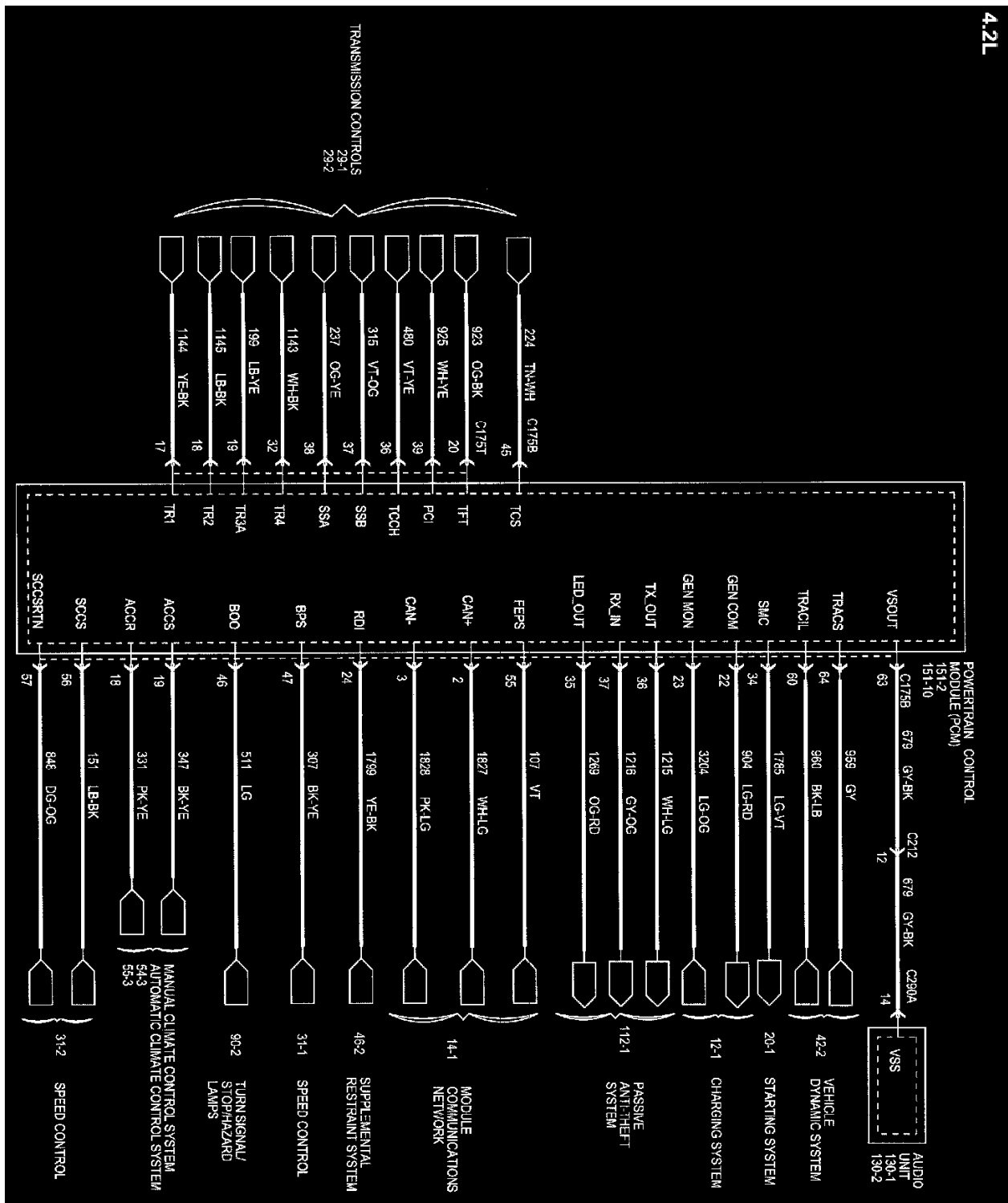
Diagrams: Other diagrams referred to by number (See Diagram ##-#, etc.) within these diagrams can be found at **Diagrams By Number**. See: Diagrams By Number

Locations: Location Views (reference numbers starting with 151-) referred to within these diagrams can be found at **Component Location Views**. See: Components/Component Location Views

25-7

PLEASE NOTE: Some diagrams may appear to be missing because of gaps in the number sequences. These "gaps" are actually for diagrams that do not apply to the vehicle model selected.

not apply to the vehicle model selected.



Next Diagram See: System Diagram/25-9

Previous Diagram See: System Diagram/25-7

Diagrams: Other diagrams referred to by number (See Diagram #-#, etc.) within these diagrams can be found at **Diagrams By Number**. See: **Diagrams By Number**

Locations: Location Views (reference numbers starting with 151-) referred to within these diagrams can be found at **Component Location Views**. See: **Components/Component Location Views**

Diagrams: Other diagrams referred to by number (See Diagram #-#, etc.) within these diagrams can be found at **Diagrams By Number**. See: Diagrams By Number

Locations: Location Views (reference numbers starting with 151-) referred to within these diagrams can be found at **Component Location Views**. See: Components/Component Location Views

Emission Control Systems

For information regarding diagrams for this system, please refer to Powertrain Management Diagrams. See: System Diagram/Wiring Diagram Index

System Diagram

For information regarding diagrams for this system, please refer to Powertrain Management diagrams. See: System Diagram/Wiring Diagram Index

Fuel Pump

For information regarding diagrams for this component, please refer to Powertrain Management Diagrams. See: System Diagram/Wiring Diagram Index

Ignition System

For information regarding additional diagrams that are closely related to the Ignition System, please refer to Powertrain Management Diagrams. See: Powertrain Management/Diagrams/Electrical Diagrams