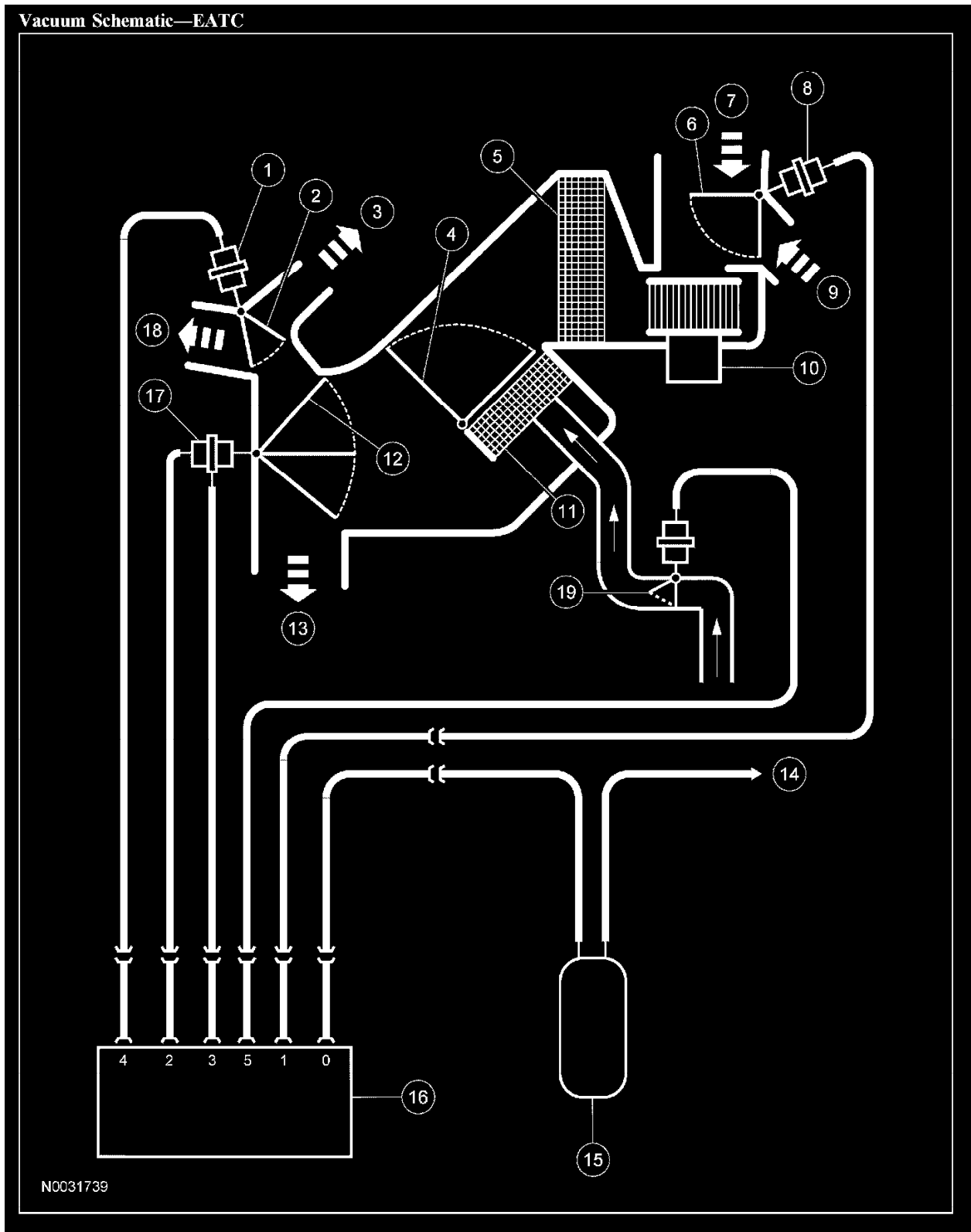


# Vehicle: Vacuum and Vapor Hose Diagrams Electronic Automatic Temperature Control System

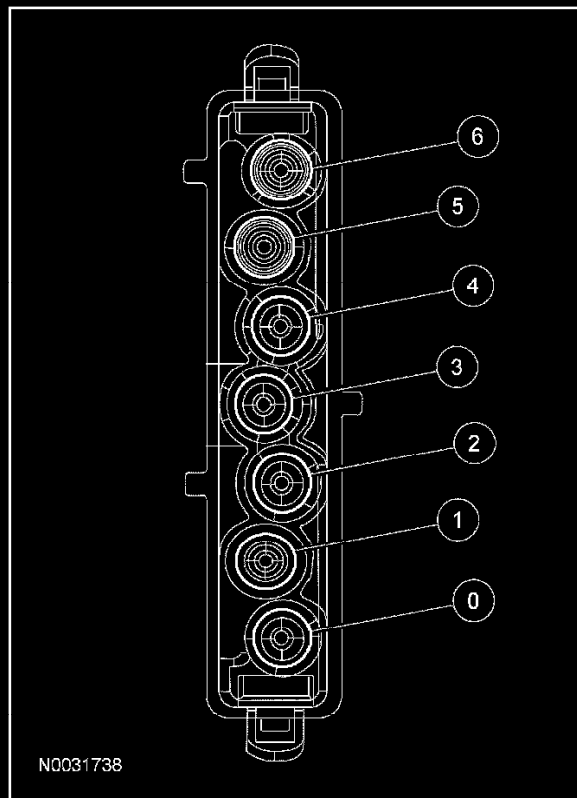


Vacuum Schematic-EATC (Part 1)

Item	Description
1	Vacuum control motor — panel/defrost door
2	Panel/defrost door (full vacuum position)
3	Defrost air flow
4	Temperature blend door (full heat position)
5	A/C evaporator core
6	Air inlet duct door (full vacuum position)
7	Outside air inlet
8	Vacuum control motor — air inlet door
9	Recirculated air inlet
10	Blower motor
11	Heater core
12	Panel/floor door (full vacuum position)
13	Floor air flow
14	Vacuum source
15	A/C vacuum reservoir tank and bracket
16	ATC solenoid and manifold
17	Vacuum control motor — panel/floor door
18	Panel vent air flow
19	Heater control valve

**Vacuum Schematic-EATC (Part 2)**

**ATC Solenoid and Manifold Vacuum Connector End View**



N0031738

Port	Hose Color	Function
0	Black	Vacuum Source
1	White	Air Inlet Duct Door
2	Yellow	Panel/Floor Door
3	Blue	Panel/Floor Door
4	Red	Panel/Defrost Door
5	Gray	Heater Control Valve
6	—	Not used

**ATC Solenoid And Manifold Vacuum Connector End View**

**Vacuum Application Chart — EATC**

Port	Color	Function	Manual Override Buttons					
			OFF	PANEL	PNL/FLR	FLR	FLR/DEF	DEF
0	Black	Vacuum Source	V	V	V	V	V	V
1	White	Air Inlet <sup>a</sup>	V	V/NV	V/NV	V/NV	V/NV	NV

**Vacuum Application Chart - EATC (Part 1)**

**Vacuum Application Chart — EATC (Continued)**

Port	Color	Function	Manual Override Buttons					
			OFF	PANEL	PNL/FLR	FLR	FLR/DEF	DEF
2	Yellow	Panel/Floor	V	NV	NV	V	NV	NV
3	Blue	Panel/Floor	V	NV	V	V	V	NV
4	Red	Panel/ Defrost	NV	V	V	NV	NV	NV
5	Gray	Heater Control Valve <sup>b</sup>	V	V/NV	V/NV	V/NV	V/NV	V/NV

- a The EATC system may be manually set to enable or disable the recirculation of cabin air by pressing the RECIRCULATION manual override button in all manual override modes except DEFROST.
- b The automatic temperature control solenoid and manifold will supply vacuum and close the heater control valve depending on the EATC module settings and ambient conditions in any setting except OFF.

V = Vacuum

NV= No Vacuum

**Vacuum Application Chart - EATC (Part 2)**