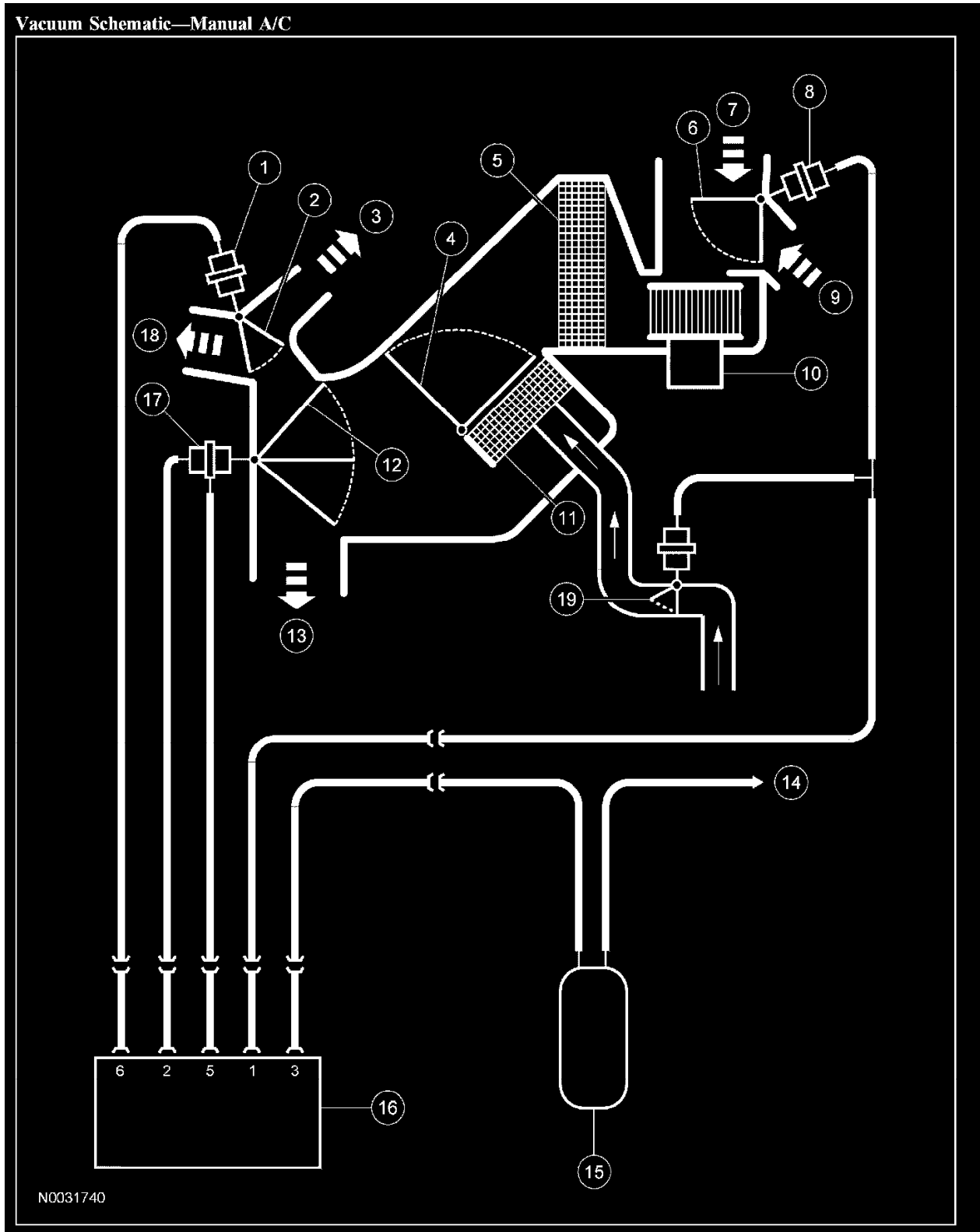


Vehicle: Vacuum and Vapor Hose Diagrams Manual Climate Control System

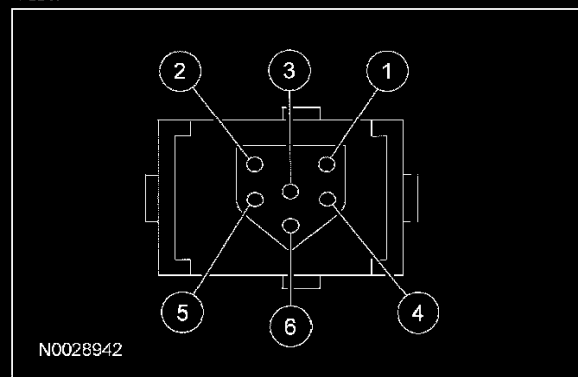


Vacuum Schematic-Manual A/C (Part 1)

Item	Description
1	Vacuum control motor — panel/defrost door
2	Panel/defrost door (full vacuum position)
3	Defrost air flow
4	Temperature blend door (full heat position)
5	A/C evaporator core
6	Air inlet duct door (full vacuum position)
7	Outside air inlet
8	Vacuum control motor — air inlet door
9	Recirculated air inlet
10	Blower motor
11	Heater core
12	Panel/floor door (full vacuum position)
13	Floor air flow
14	Vacuum source
15	A/C vacuum reservoir tank and bracket
16	A/C-heater function selector switch
17	Vacuum control motor — panel/floor door
18	Panel vent air flow
19	Heater control valve

Vacuum Schematic-Manual A/c (Part 2)

Function Selector Switch Vacuum Connector End View



Port	Hose Color	Function
1	White	Air Inlet Door
2	Yellow	Panel/Floor Door
3	Black	Vacuum Source
4	—	Not Used
5	Blue	Panel/Floor Door
6	Red	Panel/Defrost Door

Function Selector Switch Vacuum Connector End View

Vacuum Application Chart — Manual A/C

Switch Port	Color	Function	Function Selector Switch Position							
			MAX A/C	A/C	PANEL	OFF	PNL/FLR	FLOOR	FLR/DEF	DEF
1	White	Recirc/Fresh and Heater Control Valve	V	NV	NV	V	NV	NV	NV	NV
2	Yellow	Panel/Floor	NV	NV	NV	V	NV	V	NV	NV
3	Black	Vacuum Source	V	V	V	V	V	V	V	V
5	Blue	Panel/Floor	NV	NV	NV	V	V	V	V	NV
6	Red	Panel/Defrost	V	V	V	NV	V	NV	NV	NV

V = Vacuum

NV= No Vacuum

Vacuum Application Chart - Manual A/C